

2012 UCLA WOMEN'S VOLLEYBALL

WOMEN'S VOLLEYBALL CONTACT: JAMES YBIERNAS • PHONE: (310) 206-8123 • FAX: (310) 825-8664 • E-MAIL: JAMESY@ATHLETICS.UCLA.EDU • WWW.UCLABRUINS.COM

2012 UCLA SCHEDULE AND RESULTS OVERALL: 22-7 PAC-12: 14-6

8/24	vs. Notre Dame	W, 3-1 (25-17, 18-25, 25-23, 25-19)
8/25	at #4 Nebraska	L, 2-3 (20-25, 23-25, 25-23, 25-19, 13-15)
8/31	vs. Northeastern ²	W, 3-0 (25-21, 25-18, 25-21)
9/1	at UC Santa Barbara ²	W, 3-1 (21-25, 25-20, 25-17, 25-19)
9/7	vs. Idaho ³	W, 3-0 (25-16, 25-13, 25-13)
9/8	vs. San Diego State ³	W, 3-0 (25-11, 25-20, 25-18)
9/9	at #9 Hawai'i ³	W, 3-1 (28-30, 25-16, 25-17, 25-21)
9/12	#18 PEPPERDINE	W, 3-0 (25-14, 25-15, 25-22)
9/15	at Colorado State	W, 3-2 (25-20, 22-25, 25-21, 13-25, 15-10)
9/19	at #2 USC ¹	L, 1-3 (26-28, 20-25, 26-24, 17-25)
9/21	OREGON STATE¹	W, 3-0 (25-14, 25-18, 25-17)
9/26	at #5 Washington ¹	L, 2-3 (25-22, 28-30, 25-19, 26-28, 14-16)
9/28	at Washington State ¹	W, 3-0 (25-17, 25-13, 25-15)
10/5	ARIZONA STATE¹	W, 3-0 (25-22, 25-13, 25-15)
10/7	ARIZONA¹	W, 3-0 (25-16, 25-20, 27-25)
10/12	at #4 Stanford ¹	L, 2-3 (23-25, 25-19, 26-28, 25-17, 14-16)
10/14	at California ¹	W, 3-0 (25-18, 25-21, 25-18)
10/17	UTAH¹	W, 3-0 (25-22, 25-21, 25-18)
10/19	COLORADO¹	W, 3-0 (25-20, 25-16, 26-24)
10/26	WASHINGTON STATE¹	W, 3-0 (25-12, 28-26, 25-22)
10/28	#5 WASHINGTON¹	W, 3-1 (25-18, 25-22, 22-25, 28-26)
11/2	at Arizona ¹	L, 0-3 (22-25, 16-25, 24-26)
11/3	at Arizona State ¹	W, 3-1 (25-21, 25-14, 24-26, 25-16)
11/9	at Colorado ¹	W, 3-0 (25-15, 25-22, 25-12)
11/10	at Utah ¹	W, 3-2 (25-19, 21-25, 25-13, 19-25, 15-13)
11/15	CALIFORNIA¹	W, 3-0 (25-16, 25-22, 25-18)
11/16	#1 STANFORD¹	L, 1-3 (22-25, 18-25, 25-15, 25-27)
11/20	at #6 Oregon ¹	L, 0-3 (24-26, 23-25, 21-25)
11/23	#4 USC¹	W, 3-1 (19-25, 25-23, 25-17, 25-19)
11/30	LIU BROOKLYN^{4, A, B}	8 P.M.
12/1	SAN DIEGO/MICHIGAN STATE^{4, A, B}	7 P.M.
12/7	NCAA Regional Semifinal ^{5, C}	5 p.m. or 7 p.m.
12/8	NCAA Regional Final ^{5, D}	8:30 p.m.
12/13	NCAA Semifinal ^{6, E}	4 p.m. or 6 p.m.
12/15	NCAA Championship ^{6, E}	4 p.m.

All times Pacific and subject to change

HOME MATCHES IN GOLD CAPS PLAYED AT JOHN WOODEN CENTER (COLLINS COURT) EXCEPT FOR STANFORD & USC MATCHES WHICH WILL BE PLAYED AT PAULEY PAVILION

- AVCA National Ranking at Time of Match

1 - Pac-12 Conference Matches

2 - UCSB Invitational (Santa Barbara, Calif.)

3 - Verizon Volleyball Challenge (Honolulu, Hawai'i)

4 - NCAA First and Second Rounds (Pauley Pavilion)

5 - NCAA Regionals (Berkeley, Calif.)

6 - NCAA Semifinals and Championship (Louisville, Ky.)

A - Audio Broadcast Live on UCLABruins.com

B - Video Broadcast Live Online via Pac-12 Digital

C - Match Broadcast Live on ESPN3.com

D - Match Broadcast Live on ESPNU

E - Match Broadcast Live on ESPN2

NCAA FIRST AND SECOND ROUNDS • #7-SEED UCLA, USD, MSU, LIU

Friday, Nov. 30

Michigan State vs. San Diego 5:30 p.m.

Friday, Nov. 30

LIU Brooklyn vs. #7-seed UCLA 8 p.m.

Saturday, Dec. 1

Friday winners 7 p.m.

All matches at the New Pauley Pavilion

Online: Gametracker, Audio, Video

SEVENTH-SEEDED BRUINS HOST LIU BROOKLYN ON FRIDAY

The defending national champion and seventh-seeded Bruins open up their title defense on Friday against LIU Brooklyn at 8 p.m. at the New Pauley Pavilion. Gametracker and free audio and video will be available at UCLABruins.com. Michigan State and San Diego face off at 5:30 p.m. in Friday's first match.

BRUINS ON THE NET

Gametracker and free audio and video will be available for this weekend's matches. Links will be available on the women's volleyball schedule page at UCLABruins.com.

WHAT'S NEXT

The winner of the Los Angeles sub-Regional will travel to the Berkeley Regional, which will take place next Friday, Dec. 7 and Saturday, Dec. 8 at Haas Pavilion. The round of 16 opponent will be the winner of the Louisville sub-Regional, which features #10-seed Louisville, Belmont, Tennessee and Michigan. The top half of the Berkeley bracket includes #2-seed Stanford, #15-seed Iowa State and California.

BRUINS IN THE NCAA TOURNAMENT

UCLA is making its 31st appearance in the NCAA Tournament and holds an all-time record of 80-27 (.748). Since the field expanded to 64 teams in 1998, UCLA is 24-4 (.857) in the first and second rounds of the tournament, including a perfect 14-0 in the opening match. Including this season, the Bruins have hosted the first and second rounds for eight of the last 10 years. UCLA is 17-1 (.944) in first and second round home matches since '98 and 42-5 (.894) in Westwood in NCAA Tournament contests. A list of the Bruins' past performances in the NCAA Tournament is on page nine of this release.

FOUR BRUINS EARN ALL-PAC-12 CONFERENCE HONORS

Four Bruins were recognized on the All-Pac-12 Conference teams on Tuesday, as seniors Rachael Kidder and Tabi Love received First Team honors, sophomore Zoë Nightingale was named All-Pac-12 Honorable Mention and Becca Strehlow earned All-Freshman Honorable Mention team plaudits.

The award for Kidder is the third year in a row she has been honored by the conference, making her the 15th Bruin to earn at least three all-conference accolades. She was an All-Pac-10 Honorable Mention award winner in 2010 and was All-Pac-12 First Team a year ago.

Love earns her second Pac-12 award after being named Honorable Mention in 2011, as does Nightingale, who was an All-Freshman Honorable Mention selection a year ago.

The Bruins have had 95 All-Pac-10/12 selections (60 first-teamers) over the last 26 seasons, as well as 39 All-Freshman Team honorees.

TEAM NOTES

UCLA enters the week in the top 10 nationally in three categories, ranking third in kills per set (14.82), fourth in assists per set (13.87) and seventh in hitting percentage (.294). The Bruins are also 22nd in blocks per set at 2.73 ... UCLA leads all Pac-12 teams in hitting and is second in kps and aces. The Bruins also have the highest hitting mark in the conference in league matches at .292 ... UCLA surpassed the .500 hitting mark for the third time this season on Nov. 15 against California when they hit .537. The Bruins, who hit .530 at Colorado (Nov. 9) and .519 versus Idaho (Sept. 7), have posted the three-highest, single-game hitting percentage totals at UCLA in the rally scoring era (since 2001) this year ... the Bruins have surpassed the .300 hitting plateau 16 times this year and are undefeated when doing so. In all 22 wins, they have led their opponent in hitting. UCLA hit over .300

12 times all of last season ... 14 of the Bruins' 22 victories have been sweeps ... UCLA is 15-0 when holding its opponent under a .200 hitting percentage ... the Bruins reached the 20-win mark for the 14th-straight season with the Nov. 10 victory at Utah ... UCLA is 19-1 when winning the opening set (only loss at Washington, Sept. 26).

PLAYER NOTES

Senior Tabi Love enters the week at 12th nationally in kills per set (4.54) and 26th in points per set (4.94), while sophomore Zoë Nightingale is tied for 24th with 1.39 blocks per set ... Love is second among all Pac-12 players in kps and pps. Nightingale is fourth in bps and hitting (.372) ... three different Bruins had career-high hitting percentage totals on Nov. 9 at Colorado (Nightingale, .643; Love, .640; senior Rachael Kidder, .579) ... junior Kelly Reeves surpassed the 800-dig mark against USC last Friday and now has 804 for her career. She surpassed the 500-kill mark at Colorado and now has 533 for her career to go with 52 aces ... with her 21 kills against California on Nov. 15, Love has cracked the 20-kill mark nine times this year. Love has also posted two double-doubles in November against Arizona State (24 kills, 11 digs) on Nov. 3 and California (21, 11) ... over the last seven matches (all starts), freshman Becca Strehlow is averaging 11.48 assists per set, adding 40 digs (1.74 per set), 20 kills (0.87) and 17 blocks (0.74) ... freshman Karly Drolson made just her third start of the year at Oregon (DS vs. Northeastern on Aug. 31; libero at UCSB on Sept. 1 and at Oregon) and was one dig shy of a career high with 12 versus the Ducks (13 at UCSB). She also had her first-ever ace against UO ... sophomore Megan Moenao has produced at least five digs in 15 of the 20 matches she has appeared in and is averaging 2.02 digs per set this year ... senior Bojana Todorovic surpassed the 1,200-dig mark at Utah on Nov. 10 and has 1,257 for her career. She is sixth on UCLA's all-time list and is 12 away from fifth (Ashley Bowles, 1,269). Todorovic is 16th in Bruin history with 110 aces. The senior has also played in 452 sets, eighth most in UCLA history ... Kidder cracked the 1,400-kill mark against USC and now has 1,416 for her career. She is 12th on UCLA's all-time list and will need 86 during the NCAA Tournament to surpass 11th-place Kaitlin Sather's 1,501 ... junior Mariana Aquino has 11 matches this season with at least three kills and no hitting errors. She also has nine contests this year with at least five blocks ... Nightingale set a new career-best with 14 blocks against USC. It was the second time she has cracked double figures in roofs, as she had 11 in the National Championship match last year against Illinois ... junior Meg Norton is averaging 2.08 dps over her last seven matches, totaling at least four digs in every contest, including 13 against USC ... against Stanford, sophomore Karsta Lowe produced her seventh-career, double-figure kills match, with six of them coming this year.

SCOUTING THE LIU BROOKLYN BLACKBIRDS

After a two-year hiatus, the Blackbirds (25-7) are back in the NCAA Tournament for the seventh time in program history after going 16-0 in the Northeast Conference and then winning the league's tournament to gain the NCAA automatic bid. LIU Brooklyn has played two teams that reached the NCAA Tournament, defeating Hofstra in four on Sept. 11 and getting swept by Minnesota on Aug. 31. The Blackbirds are hitting .249 as a team, averaging 13.50 kills, 1.67 aces, 14.29 digs and 2.32 blocks per set. Five players are averaging at least 2.00 kps, led by sophomore Annika Foit's 3.98 to go with a team-best 51 aces. Freshman Tamara Ignjic is second on the squad with 3.03 kps and third with 38 aces. Sophomore Vera Djuric handles the setting duties and is posting 10.73 assists per set and 41 aces, which is second on the team. Freshman Adriana Vinas Joy is tops with 4.28 dps, while

SEVEN-TIME NATIONAL CHAMPIONS (1971, 1974, 1975, 1984, 1990, 1991, 2011) • FOUR-TIME NCAA NATIONAL CHAMPIONS (1984, 1990, 1991, 2011)

AVCA TOP 25 COACHES POLL (Nov. 19)

NO.	SCHOOL	POINTS	RECORD	LAST
1.	Penn State (56)	1495	27-2	2
2.	Stanford (4)	1409	25-3	1
3.	Texas	1380	23-3	3
4.	USC	1274	26-4	8
5.	Washington	1233	22-5	6
6.	Oregon	1197	23-4	4
7.	UCLA	1177	21-6	5
8.	Hawai'i	1123	24-2	7
9.	Louisville	969	27-3	10
10.	Nebraska	921	21-6	9
11.	Minnesota	888	22-7	14
12.	Florida State	858	26-3	11
13.	Dayton	747	25-4	12
14.	Ohio State	705	22-8	15
15.	Florida	657	23-4	16
16.	BYU	582	25-3	13
17.	Western Kentucky	511	32-3	17
18.	Iowa State	467	18-7	19
19.	San Diego	413	21-6	18
20.	Kansas	344	23-6	22
21.	Creighton	242	26-3	23
22.	Purdue	234	19-10	21
23.	Miami Florida	177	25-4	24
24.	North Carolina	123	24-5	25
25.	Kansas State	102	21-7	20

Others receiving votes and appearing on two or more ballots:

Saint Mary's 68, Tennessee 60, Michigan State 36, Texas A&M 36, Marquette 26, **Pepperdine 22**, Kentucky 9, Michigan 4, **Colorado State 2**. Two schools were listed on only one ballot for a total of nine points.

VOLLEYBALL MAGAZINE TOP 20 POLL (Nov. 27)

NO.	SCHOOL (PTS./1ST)	NO.	SCHOOL (PTS.)
1.	Penn State (200/10)	11.	Minnesota (101)
2.	Stanford (190)	12.	Florida State (98)
3.	Oregon (168)	13.	Florida (80)
4.	UCLA (165)	14.	BYU (53)
5.	USC (157)	15.	Dayton (50)
6.	Texas (156)	16.	Iowa State (47)
7.	Washington (135)	17.	Ohio State (35)
8.	Hawai'i (130)	18.	San Diego (31)
9.	Louisville (118)	19.	Western Kentucky (25)
10.	Nebraska (115)	20.	Kansas (15)

Others receiving votes: Miami Florida, Creighton, Michigan State, Purdue, Tennessee, Michigan, Kentucky, Texas A&M.

Bold indicates 2012 UCLA opponents**UCLA IN THE NATIONAL RANKINGS**

DATE	AVCA	VB MAGAZINE
Preseason	1st (1,485 pts./54 1st)	1st (190 pts./8 1st)
Aug. 27	3rd (1,344 pts./1 1st)	3rd (176 pts.)
Sept. 3	3rd (1,351 pts./1 1st)	3rd (179 pts.)
Sept. 10	2nd (1,418 pts./1 1st)	2nd (188 pts.)
Sept. 17	1st (1,469 pts./39 1st)	1st (200 pts./10 1st)
Sept. 24	4th (1,314 pts./3 1st)	4th (165 pts.)
Oct. 1	6th (1,230 pts.)	5th (156 pts.)
Oct. 8	7th (1,200 pts.)	6th (152 pts.)
Oct. 15	6th (1,169 pts.)	6th (143 pts.)
Oct. 22	6th (1,189 pts.)	6th (150 pts.)
Oct. 29	5th (1,257 pts.)	5th (159 pts.)
Nov. 5	6th (1,163 pts.)	6th (151 pts.)
Nov. 12	5th (1,200 pts.)	5th (158 pts.)
Nov. 19	7th (1,177 pts.)	6th (146 pts.)
Nov. 26	No poll	4th (165 pts.)

senior Ashley Rice is first with 1.27 bps. Kyle Robinson is in his fifth season as LIU's head coach and has a record of 96-61. The only meeting between the Bruins and the Blackbirds was on Sept. 16, 2006 in College Park, Md., with UCLA winning in three (30-20, 30-25, 30-14).

SERIES HISTORY: UCLA VS. LIU BROOKLYN

9/16/06 in College Park, Md. UCLA 3-0 (30-20, 30-25, 30-14)

SCOUTING THE SAN DIEGO TOREROS

San Diego (21-6) is making its 16th appearance in the NCAA Tournament, having shared the West Coast Conference title with BYU with a 13-3 league record. The Toreros have not played since Nov. 17 when they defeated BYU in five sets. San Diego is 3-3 against Top 25 teams, beating Pepperdine twice and BYU, while losing to BYU, Texas and USC. The Toreros are hitting .239 as a team, averaging 14.54 kills, 1.01 aces, 16.05 digs and 2.23 blocks per set. Five players are averaging at least 2.00 kps, led by juniors Chloe Ferrari and Katie Hoekman, who are each at 2.69 kps. Hoekman is also first with 1.10 bps. Sophomore Sandra Lozic is third on the squad with 2.62 kps. Junior Rachel Alvey handles the setting duties and is averaging 9.51 assists per set, while senior Kandiss Anderson is tops on the team with 3.44 dps. Head coach Jennifer Petrie is in her 14th year at San Diego and has a record of 255-93. The Bruins have won all seven matchups with the Toreros, including last year in the second round of the NCAA Tournament at the John Wooden Center (Dec. 3, 2011). Rachael Kidder and Tabi Love each had 17 kills, Bojana Todorovic posted 13 digs and Mariana Aquino added 11 blocks in a 25-16, 25-15, 22-25, 25-17 win. A recap of last year's matchup is available on page 10 of this release. Three of the seven meetings between the two teams have been in the NCAA Tournament, the only matchups to take place in Westwood. The Bruins swept the Toreros in the second round of the 2005 Tournament and in the first round in 2003.

SERIES HISTORY: UCLA VS. SAN DIEGO

12/3/11 at UCLA ! UCLA 3-1 (25-16, 25-15, 22-25, 25-17)
 8/28/10 in Honolulu UCLA 3-0 (25-14, 25-19, 25-21)
 9/15/07 at USD UCLA 3-2 (20-30, 30-23, 27-30, 30-25, 15-13)
 12/3/05 at UCLA ! UCLA 3-0 (30-24, 30-23, 30-19)
 9/3/05 in Reno, Nev. UCLA 3-1 (24-30, 32-30, 30-21, 30-27)
 12/5/03 at UCLA * UCLA 3-0 (30-20, 30-17, 30-24)
 9/7/96 in Honolulu UCLA 3-1 (11-15, 16-14, 15-9, 15-1)
 * - NCAA Tournament 1st Round; ! - NCAA Tournament 2nd Round

SCOUTING THE MICHIGAN STATE SPARTANS

The Spartans (23-9) are making their 15th appearance in the NCAA Tournament, earning an at-large bid after an 11-9 (T-6th) Big Ten record. Michigan State, which enters the postseason on a two-match losing streak, is 2-7 against ranked teams, defeating Nebraska and Minnesota. The Spartans are hitting .271 as a team, averaging 14.20 kills, 1.62 aces, 13.50 digs and 2.26 blocks per set. Four players are averaging over 2.00 kps, led by the 4.39 for junior Lauren Wicinski, who is also first with 77 aces. Senior Amy Dentlinger is second on the squad with 2.60 kps, sophomore Taylor Galloway is third with 2.27 kps and second with 2.24 dps and junior Alexis Mathews is fourth with 2.05 kps and first with 1.19 bps. Junior Kristen Kelsay (7.03 assists per set) and freshman Halle Peterson (4.68) have shared setting duties, while sophomore Kori Moster is first on the team with 4.53 dps. Cathy George is in her eighth season as Michigan State's head coach and has a record of 144-113 to go with a 509-337 overall mark in 25 seasons of coaching. The Bruins have won all three matchups against the Spartans, but the last meeting was in the second round of the NCAA Tournament at Pauley Pavilion on Dec. 3, 2000. UCLA came back from 2-1 down to win in five (15-7, 13-15, 14-16, 15-6, 15-9).

SERIES HISTORY: UCLA VS. MICHIGAN STATE

12/3/00 at UCLA * UCLA 3-2 (15-7, 13-15, 14-16, 15-6, 15-9)
 9/8/00 in Kent, Ohio UCLA 3-1 (13-15, 15-12, 15-11, 15-7)
 2/3/72 in Miami UCLA 2-0 (15-1, 15-7)
 * - NCAA Tournament 2nd Round

RECAPPING UCLA'S LAST TWO MATCHES**Friday - UCLA 3, USC 1**

Seventh-ranked UCLA had 17.5 blocks, including a career-high 14 from sophomore Zoë Nightingale, and on Senior Night, seniors Rachael Kidder (18 kills), Tabi Love (16 kills) and Bojana Todorovic (18 digs) helped the Bruins to a four-set win over #4

USC on Friday at the New Pauley Pavilion. Set scores were 19-25, 25-23, 25-17, 25-19.

The Bruins finish the regular season with an overall record of 22-7 and a 14-6 mark in Pac-12 play, while the Trojans fall to 27-5 and 15-5 in league.

Kidder was just shy of a double-double with nine digs to go with four blocks. Junior Kelly Reeves was one dig shy of tying a career best with 18, while junior Meg Norton added 13 digs. Sophomore Megan Moenoa recorded 32 assists, six digs and four blocks, junior Mariana Aquino added six blocks and a .625 hitting percentage with only one error in eight attempts and sophomore Karsta Lowe posted five kills.

The Trojans opened the match with three in a row and held a 5-1 lead before the Bruins rallied with five straight to take their first advantage of the contest. A USC service error, back-to-back kills by Love, a Kidder ace and a combo block by Nightingale and freshman Becca Strehlow made it 6-5 home team. UCLA still led 7-6, but USC countered with five in a row to go back ahead 11-7.

The Trojans' lead would remain between two and six for the rest of the set. UCLA cut its deficit to a pair at 19-17, but USC scored six of the last eight to win it 25-19. Love had nine of the Bruins' 14 kills in the opening set, hitting .500 with only one error in 16 attempts, as UCLA was out-hit .345 to .100.

UCLA led early in set two 2-1, but a 6-0 USC run gave the visitors a 7-2 edge. The Bruins came back with a 6-2 run to trim their deficit to one at 9-8. Love had two kills during the run, Moenoa posted a kill and an ace, Kidder recorded a kill and USC committed a service error. With USC still on top 12-9, a 5-0 UCLA run put the home squad back up by two. A kill by Lowe, a Kidder/Nightingale combo block, a Nightingale kill and back-to-back combo blocks from the duo of Moenoa and Nightingale put UCLA up 14-12.

With UCLA ahead 16-15, USC scored three straight to go back up 18-16. A kill by Aquino and a USC attack error evened things up at 18, and seven sideouts later with the Trojans up 22-21, a Kidder kill, a USC ball handling error and a Love/Nightingale combo block gave the Bruins two set points. The Trojans saved the first try, but a Love kill finished off a 25-23 victory. Kidder paced the Bruins with five kills, while Love added three. Reeves notched seven digs and Todorovic had five, as the Trojans still out-hit the Bruins .240 to .200.

USC scored the first three of set three, but a 4-0 UCLA run on a Love/Nightingale combo block, a Kidder kill and back-to-back combo roofs from Moenoa and Nightingale and Kidder and Nightingale made it 4-3. USC sided out to tie the score at four, but a 4-1 UCLA run on kills by Norton and Nightingale and combo roofs from Moenoa and Nightingale and Aquino and Love made it 8-5. The Bruins would lead for the rest of the set. Up 8-7, a 5-1 run on two kills from Aquino, a Love kill, a combo block by Aquino and Lowe and a Trojan attack error made it 13-8.

The Trojans would get to within a pair on a few occasions, but no closer. At 18-16, the Bruins scored seven of the last eight of the set to win the third 25-17. Kills by Reeves and Kidder, with a USC attack error in between, made it 21-16. After a USC sideout, a Kidder kill, a Love/Nightingale combo block and a Trojan attack error gave the Bruins a bunch of set points. UCLA's ninth block of the set, from Kidder and Nightingale, clinched a 25-17 victory. Kidder had four kills, Aquino posted three and Nightingale notched six blocks. Reeves and Todorovic each had six digs, as the Bruins out-hit the Trojans .303 to .000.

UCLA held an early 3-1 lead in the fourth, but a 5-1 USC run put the visitors up 6-4. The Bruins responded with five of the next six on two kills by Kidder, a Moenoa kill and two Trojan errors to go back up 9-7, but USC countered with a 6-2 run to re-take the lead at 13-11. A kill by Moenoa and two in a row for Love put the Bruins ahead 14-13, and despite ties at 14, 15 and 16-all, UCLA held on to its lead for the rest of the set.

A USC service error and three straight kills by Kidder made it 20-16. The Trojans scored the next two, but back-to-back USC errors and consecutive Nightingale solo blocks gave UCLA a bunch of match points. USC saved the first try, but an attack error on attempt number two finished a 25-19 victory for the Bruins. Kidder had seven kills in the fourth, while Love added three. Norton and Todorovic each recorded five digs, as the Bruins out-hit the Trojans .237 to .167.

Tuesday - Oregon 3, UCLA 0

Senior Tabi Love led the Bruins with 16 kills, junior Kelly Reeves added 13 digs and seven kills and freshman Karly Drolson posted 12 digs, but the seventh-ranked Bruins lost in three at #6 Oregon on Tuesday. Set scores were 26-24, 25-23, 25-21.

The Bruins fall to 21-7 overall and 13-6 in Pac-12 play, while the Ducks improve to 24-4 and 15-4 in league action.

Senior Rachael Kidder had eight kills and five digs, sophomore Zoë Nightingale added five kills and no errors in 11 attempts (.455 hitting percentage) with four blocks, junior Mariana Aquino produced five blocks and junior Meg Norton totaled six digs. Sophomore Megan Moenoa (19 assists, five digs and three blocks) and freshman Becca Strehlow (16 assists) shared setting duties, as UCLA hit .178 for the match.

The Bruins scored the first three points of the match on two Love kills and a combo block by Love and Nightingale. Leading 5-3, a 4-0 UCLA run gave the visitors a set-best lead of six. Two consecutive Oregon attack errors, a Love kill and an Aquino/Strehlow combo block made it 9-3. With the score 11-7, the Ducks rallied with five straight to take their first lead of the match. An Oregon service error and a Nightingale kill put the Bruins back in front 13-12, but a 4-1 Duck run put the home team up 16-14.

Trailing 20-19, the Bruins regained the lead on kills by Reeves and Love to make it 21-20. Five sideouts later and tied at 23, Oregon scored another to earn its first set point. A Kidder kill saved the first attempt, but two in a row for the Ducks completed a 26-24 win. Love led the Bruins with eight kills in the opener, while Kidder added four. Reeves posted seven digs and Drolson had six, as the Bruins were out-hit .190 to .152.

UCLA held an early 6-4 lead in the second set, but a 5-0 Oregon run put the home team up 9-6. A 4-0 UCLA run put the visitors

ahead again 10-9. Two by the Ducks put them back up, but a combo block by Aquino and sophomore Karsta Lowe and an Aquino ace made it 12-11 UCLA. After an Oregon sideout, kills by Lowe and Moenoa put the Bruins up 14-12.

UCLA's biggest lead of the set was three at 18-15, 19-16 and 20-17, but the Bruins would score just three points for the rest of the set. A 7-2 Oregon run gave the home team two set points. A service error on the first attempt kept the Bruins alive, but the Ducks won the second 25-23. Love had three kills, while Reeves added three kills and five digs, as the Bruins were out-hit .271 to .229.

The Bruins never led in the third, as Oregon completed the sweep. The Ducks held an early 5-2 lead, but a 3-1 UCLA run on kills by Kidder and Love and an Aquino/Moenoa combo block made it 6-5. Still down by three at 8-5, a 4-1 UCLA run on two kills by Love, a Reeves kill and an Oregon attack error tied things up at nine.

Up 12-11, the Ducks scored four of five to take a 16-12 edge. Still down by four at 19-15, four in a row for UCLA on a Love kill, an Aquino/Reeves combo block, a Kidder kill and a Kidder solo block tied the score at 19. However, Oregon would finish the match on a 6-2 run to clinch a 25-21 victory in the third. Love led the Bruins with five kills in the third, Kidder added four and Nightingale posted three. The Bruins were out-hit .294 to .162.

2012 UCLA WOMEN'S VOLLEYBALL ROSTER

NO	NAME	POS	HT	YR	EXP	HOMETOWN (HIGH SCHOOL/LAST SCHOOL)
2	Reeves, Kelly	OH	6-0	JR	2V	San Diego, Calif. (Cathedral Catholic HS)
3	Love, Tabi	OH	6-5	SR	1V	Dauphin, Manitoba (Dauphin Regional Secondary/Minnesota)
4	Lawless, Haley	OH	6-3	FR	HS	Tempe, Ariz. (Seton Catholic HS)
5	Strehlow, Becca	S	6-0	FR	HS	Long Beach, Calif. (Long Beach Wilson Classical HS)
6	Drolson, Karly	DS/L	5-6	FR	HS	Del Mar, Calif. (Torrey Pines HS)
7	Klineman, Maddy	OH	6-3	FR	HS	Manhattan Beach, Calif. (Mira Costa HS)
9	Moenoa, Megan	S	5-8	SO	1V	Long Beach, Calif. (Lakewood HS)
10	Todorovic, Bojana	L/OH	5-11	SR	3V	Irvine, Calif. (University HS)
11	Kidder, Rachael	OH	6-3	SR	3V	Moorpark, Calif. (Moorpark HS)
12	Aquino, Mariana	MB	6-3	JR	2V	Curitiba, Brazil (Pitagoras Cidade Jardim)
13	Nightingale, Zoë	MB	6-3	SO	1V	Sacramento, Calif. (St. Francis HS)
14	Norton, Meg	DS/L	5-11	JR	2V	Pacific Palisades, Calif. (Harvard-Westlake HS)
15	Boland, Hannah	OH/MB	6-2	FR	HS	Sunnyvale, Calif. (Castilleja HS)
16	Inouye, Rachel	DS/L	5-6	FR	HS	Kailua, Hawai'i (Punahou School)
17	Lowe, Karsta	OH	6-4	SO	1V	Rancho Santa Fe, Calif. (La Costa Canyon HS)
19	Fincher, Phelix	DS/L	5-5	FR	HS	Los Angeles, Calif. (Campbell Hall HS)

Head Coach: Michael Sealy, 3rd Year (UCLA, 1993)

Assistant Coach: Joy McKenzie-Fuerbringer, 3rd Year (Long Beach State, 1994)

Assistant Coach: Dan O'Dell, 2nd Year (Penn State, 2006)

Director of Volleyball Operations: Cayley Thurlby, 2nd Year (Hawai'i, 2007)

Volunteer Assistant Coach: Stein Metzger, 1st Year (UCLA, 1996)

Student Assistant: Nicole Favreau, 2nd Year

Assistant Athletic Trainer: Karissa Scherer, 1st Year

Student Athletic Trainers: Mara Perscheid and Charlotte Dyer

PRONUNCIATION GUIDE

Mariana Aquino	mar-ee-ah-na ah-kee-no	Karsta Lowe	low
Hannah Boland	bo-land	Joy McKenzie-Fuerbringer	fyur-bringer
Phelix Fincher	felix	Stein Metzger	stine
Rachel Inouye	e-no-way	Megan Moenoa	moy-no-uh
Rachael Kidder	rachel	Zoë Nightingale	zoe-e night-in-gale
Haley Lawless	hey-lee	Becca Strehlow	stray-low
Tabi Love	tab-e	Bojana Todorovic	bo-yawn-uh toe-DOE-roe-vitch



2012 UCLA WOMEN'S VOLLEYBALL QUICK FACTS

Location	J.D. Morgan Center, 325 Westwood Plaza, Los Angeles, CA 90095
Founded	1919
Enrollment	40,500
Nickname	Bruins
Colors	Blue and Gold
Conference	Pac-12
Chancellor	Dr. Gene Block
Athletic Director	Dan Guerrero
Senior Associate A.D./SWA	Petrina Long
Faculty Athletic Representative	Donald Morrison
Home Courts for 2012	John Wooden Center/Pauley Pavilion
Capacities	2,000/13,800
Press Row Number	(310) 825-1899
Head Coach	Michael Sealy (UCLA, 1993), 3rd Year
Career Record	74-22 (.771)
Assistant Coach	Joy McKenzie-Fuerbringer, 3rd Year
Assistant Coach	Dan O'Dell, 2nd Year
Women's Volleyball Office Phone	(310) 206-6839
2011 Record	30-6
2011 Pac-12 Record	17-5 (2nd)
2011 NCAA Finish	6-0 (National Champions)
2011 Final AVCA Ranking	1st
Letterwinners Returning/Lost	9/9
Starters Returning/Lost	5/1 + libero
Newcomers	7
All-Time Record	1,180-323 (.785)
NCAA Tournament Appearances	31st in 2012
NCAA Postseason Record	80-27 (.748)
All-Time Postseason Record	154-37 (.806)
National Championships	7 ('72, '74, '75, '84, '90, '91, '11)
NCAA Championships	4 ('84, '90, '91, '11)
Women's Volleyball SID	James Ybiernas
Ybiernas' Office Phone	(310) 206-8123
Ybiernas' Cell Phone	(818) 635-8873
Ybiernas' E-mail	jamesy@athletics.ucla.edu
Sports Information Fax	(310) 825-8664
Website	www.uclabruins.com

MEDIA GUIDELINES AND POLICIES

Credentials: Media and photography credentials for UCLA home matches may be obtained by working press only by contacting Assistant Sports Information Director James Ybiernas at the phone numbers or e-mail address above. All requests should be submitted at least 24 hours in advance. Credentials can be picked up at the main entrance to the John Wooden Center.

Photography: TV and photo credentials entitle video and still photographers to shoot from designated spots on the floor. Media members are not allowed to sit between the 10-foot lines on the sport court, but may be seated opposite the benches in the break between the tables if they are on the brown tarp off of the sport court. Flash photography is prohibited.

Interviews: All interviews must be arranged through the UCLA Sports Information Office and Assistant Sports Information Director James Ybiernas. Student-athletes have been instructed not to grant any interviews, in person or by telephone, not arranged by the Sports Information Office. Telephone numbers are private and will not be released. Please do not expect student-athletes to be available if you have not made prior arrangements. Players and coaches are available before or after practice depending on availability. Practice is generally from 2-5 p.m. in Pardee Gym at the John Wooden Center. Please contact the Sports Information Office to arrange access into the John Wooden Center. Afternoon interviews will require advance planning. Any photographer planning to attend practice must be cleared in advance by the John Wooden Center staff. If you would like to reach a member of the UCLA women's volleyball team on the road, please contact James Ybiernas.

UCLA PAC-12 PLAYERS OF THE WEEK

DATE	PLAYER
9/3 Defensive POW	Karsta Lowe, UCLA
10/29 Offensive POW	Tabi Love, UCLA

UCLA RANKINGS IN THE PAC-12 (THRU 11/23)

Hitting Percentage	1st (.294)
Assists Per Set	2nd (13.87)
Kills Per Set	2nd (14.82)
Blocks Per Set	5th (2.73)
Opponent Hitting Percentage	6th (.205)
Digs Per Set	8th (14.16)
Service Aces Per Set	11th (1.02)

UCLA RANKINGS IN THE PAC-12 (CONF. ONLY)

Hitting Percentage	1st (.292)
Assists Per Set	2nd (14.38)
Kills Per Set	2nd (15.30)
Opponent Hitting Percentage	5th (.223)
Blocks Per Set	5th (2.57)
Service Aces Per Set	5th (1.04)
Digs Per Set	7th (14.15)

BRUINS IN THE PAC-12 TOP 10 (THRU 11/23)

Kills Per Set	
2. Tabi Love	4.54
7. Rachael Kidder	4.00

Points Per Set

2. Tabi Love	4.94
7. Rachael Kidder	4.48

Hitting Percentage (Minimum 3.0 Attempts Per Set)

4. Zoë Nightingale	.372
9. Karsta Lowe	.330

Blocks Per Set

4. Zoë Nightingale	1.39
--------------------	------

Assists Per Set

5. Becca Strehlow	10.40
6. Megan Moenoa	10.19

Digs Per Set

8. Bojana Todorovic	3.90
---------------------	------

BRUINS IN THE PAC-12 TOP 10 (CONF. ONLY)

Points Per Set	
2. Tabi Love	5.18
5. Rachael Kidder	4.60

Kills Per Set

2. Tabi Love	4.82
6. Rachael Kidder	4.14

Assists Per Set

3. Becca Strehlow	10.87
6. Megan Moenoa	10.46

Blocks Per Set

3. Zoë Nightingale	1.45
--------------------	------

Hitting Percentage (Minimum 3.0 Attempts Per Set)

5. Zoë Nightingale	.362
--------------------	------

Digs Per Set

8. Bojana Todorovic	3.93
---------------------	------

2012 PAC-12 CONFERENCE WOMEN'S VOLLEYBALL STANDINGS

SCHOOL	CONFERENCE					OVERALL						
	W	L	PCT	H	A	W	L	PCT	H	A	N	
#2-seed Stanford	19	1	.950	10-0	9-1	27	3	.900	14-0	10-3	3-0	
#5-seed Oregon	16	4	.800	8-2	8-2	25	4	.862	10-2	11-2	4-0	
#6-seed USC	15	5	.750	9-1	6-4	27	5	.844	15-1	8-4	4-0	
#7-seed UCLA	14	6	.700	9-1	5-5	22	7	.759	10-1	8-6	4-0	
#13-seed Washington	14	6	.700	8-2	6-4	23	6	.793	13-2	8-4	2-0	
Arizona State	9	11	.450	6-4	3-7	20	13	.606	10-4	6-8	4-1	
California	9	11	.450	4-6	5-5	15	15	.500	8-6	6-7	1-2	
Arizona	8	12	.400	5-5	3-7	16	15	.516	12-7	3-8	1-0	
Utah	5	15	.250	4-6	1-9	14	19	.424	7-6	3-10	4-3	
Colorado	4	16	.200	4-6	0-10	14	17	.452	7-8	3-10	4-0	
Oregon State	4	16	.200	3-7	1-9	14	18	.438	3-7	4-10	7-1	
Washington State	3	17	.150	3-7	0-10	13	19	.406	6-7	2-11	5-1	

THIS WEEK IN THE PAC-12

FRIDAY, NOV. 30 - SATURDAY, DEC. 1 (LOS ANGELES, CALIF.)

Michigan State vs. San Diego	5:30 p.m. Friday
LIU Brooklyn at #7-seed UCLA	8 p.m. Friday
Friday winners	7 p.m. Saturday

Thursday, Nov. 29 - Friday, Nov. 30 (Los Angeles, Calif.)

San Diego State vs. Saint Mary's	5 p.m. Thursday
Fairfield at #6-seed USC	7:30 p.m. Thursday
Thursday winners	7 p.m. Friday

Thursday, Nov. 29 - Friday, Nov. 30 (Ames, Iowa)

California vs. North Carolina	3 p.m. Thursday
IPFW at #15-seed Iowa State	5:30 p.m. Thursday
Thursday winners	5:30 p.m. Friday

Friday, Nov. 30 - Saturday, Dec. 1 (Stanford, Calif.)

Loyola Marymount vs. Western Kentucky	5:30 p.m. Friday
Jackson State at #2-seed Stanford	8 p.m. Friday
Friday winners	7 p.m. Saturday

Friday, Nov. 30 - Saturday, Dec. 1 (Eugene, Ore.)

Pepperdine vs. Dayton	5:30 p.m. Friday
Northern Colorado at #5-seed Oregon	8 p.m. Friday
Friday winners	8 p.m. Saturday

Friday, Nov. 30 - Saturday, Dec. 1 (Provo, Utah)

Arizona State vs. Oklahoma	4 p.m. Friday
New Mexico State at #12-seed BYU	6 p.m. Friday
Friday winners	6 p.m. Saturday

Friday, Nov. 30 - Saturday, Dec. 1 (Seattle, Wash.)

Santa Clara vs. Hawai'i	5 p.m. Friday
Central Arkansas at #13-seed Washington	7 p.m. Friday
Friday winners	7 p.m. Saturday

All Times Pacific

LAST WEEK IN THE PAC-12

Monday, Nov. 19

California 3, Utah 2¹

Tuesday, Nov. 20

#6 Oregon 3, #7 UCLA 0¹#4 USC 3, Oregon State 0¹

Wednesday, Nov. 21

#2 Stanford 3, Colorado 1¹Arizona State 3, **#5 Washington 1**¹Washington State 3, Arizona 1¹

Friday, Nov. 23

#7 UCLA 3, #4 USC 1¹Arizona State 3, Arizona 1¹Utah 3, Colorado 1¹#2 Stanford 3, California 0¹#5 Washington 3, Washington State 0¹#6 Oregon 3, Oregon State 0¹Home Team Underlined

1 - Pac-12 Conference Matches





2012 UCLA Women's Volleyball
UCLA Combined Team Statistics (as of Nov 23, 2012)
All matches



Overall record: 22-7 Conf: 14-6 Home: 10-1 Away: 8-6 Neutral: 4-0

#	Player	sp	Attack					Set		Serve			re	Dig		Blocking					bhe	points
			k	k/s	e	ta	pct	a	a/s	sa	se	sa/s		dig	dig/s	bs	ba	total	blk/s	be		
3	Love, Tabi	105	477	4.54	130	1145	.303	9	0.09	6	10	0.06	-	89	0.85	16	40	56	0.53	4	1	519.0
11	Kidder, Rachael	103	412	4.00	158	1076	.236	15	0.15	9	22	0.09	-	136	1.32	18	45	63	0.61	7	0	461.5
17	Lowe, Karsta	76	155	2.04	53	309	.330	2	0.03	2	9	0.03	-	37	0.49	0	36	36	0.47	3	0	175.0
13	Nightingale, Zoe	105	155	1.48	35	323	.372	9	0.09	4	2	0.04	-	26	0.25	18	128	146	1.39	11	0	241.0
2	Reeves, Kelly	102	145	1.42	44	347	.291	36	0.35	19	24	0.19	-	255	2.50	5	29	34	0.33	1	1	183.5
12	Aquino, Mariana	91	99	1.09	27	218	.330	16	0.18	20	28	0.22	-	48	0.53	4	80	84	0.92	15	0	163.0
15	Boland, Hannah	20	20	1.00	7	40	.325	2	0.10	0	1	0.00	-	2	0.10	2	10	12	0.60	3	1	27.0
5	Strehlow, Becca	63	53	0.84	12	87	.471	655	10.40	6	7	0.10	-	129	2.05	2	27	29	0.46	8	5	74.5
7	Klineman, Maddy	8	6	0.75	3	21	.143	0	0.00	0	1	0.00	-	2	0.25	0	2	2	0.25	0	0	7.0
9	Moenoa, Megan	59	29	0.49	10	67	.284	601	10.19	11	15	0.19	-	119	2.02	2	42	44	0.75	11	2	63.0
14	Norton, Meg	100	3	0.03	3	14	.000	11	0.11	14	7	0.14	-	202	2.02	0	0	0	0.00	0	0	17.0
10	Todorovic, Bojana	100	2	0.02	1	3	.333	93	0.93	15	26	0.15	-	390	3.90	0	0	0	0.00	2	2	17.0
16	Inouye, Rachel	1	0	0.00	0	0	.000	0	0.00	0	0	0.00	-	3	3.00	0	0	0	0.00	0	0	0.0
19	Fincher, Phelix	3	0	0.00	0	0	.000	0	0.00	0	0	0.00	-	0	0.00	0	0	0	0.00	0	0	0.0
6	Drolson, Karly	32	0	0.00	0	1	.000	7	0.22	1	6	0.03	-	49	1.53	0	0	0	0.00	0	0	1.0
UCLA		105	1556	14.82	483	3651	.294	1456	13.87	107	158	1.02	71	1487	14.16	67	439	286.5	2.73	65	12	1949.5
Opponents		105	1358	12.93	599	3708	.205	1277	12.16	71	189	0.68	107	1384	13.18	33	319	192.5	1.83	45	18	1621.5

Team Statistics	UCLA	OPP
ATTACK		
Kills	1556	1358
Errors	483	599
Total Attacks	3651	3708
Attack Pct	.294	.205
Kills/Set	14.8	12.9
SET		
Assists	1456	1277
Assists/Set	13.9	12.2
SERVE		
Aces	107	71
Errors	158	189
Aces/Set	1.0	0.7
SERVE RECEPTIONS		
Errors	71	107
Errors/Set	0.7	1.0
DEFENSE		
Digs	1487	1384
Digs/Set	14.2	13.2
BLOCKING		
Block Solo	67	33
Block Assist	439	319
Total Blocks	286.5	192.5
Blocks/Set	2.7	1.8
Block Errors	65	45
Ball handling errors	12	18
ATTENDANCE		
Total	14262	37002
Dates/Avg Per Date	11/1297	14/2643
Neutral site #/Avg	4/4412	
Current win streak	1	-
Home win streak	1	-

Date	Opponent	Score	Score by set	Att.
Aug 24	vs Notre Dame	w 3-1	25-17,18-25,25-23,25-19	4129
Aug 25	at #4 Nebraska	L 2-3	20-25,23-25,25-23,25-19,13-15	4186
!Aug 31	vs Northeastern	w 3-0	25-21,25-18,25-21	190
!Sep 01	at UC Santa Barbara	w 3-1	21-25,25-20,25-17,25-19	360
@Sep 07	vs Idaho	w 3-0	25-16,25-13,25-13	6391
@Sep 08	vs San Diego State	w 3-0	25-11,25-20,25-18	6936
@Sep 09	at #9 Hawai'i	w 3-1	28-30,25-16,25-17,25-21	8835
Sep 12	#18 PEPPERDINE	w 3-0	25-14,25-15,25-22	842
Sep 15	at Colorado State	w 3-2	25-20,22-25,25-21,13-25,15-10	5641
*Sep 19	at #2 USC	L 1-3	26-28,20-25,26-24,17-25	3712
*Sep 21	OREGON STATE	w 3-0	25-14,25-18,25-17	1143
*Sep 26	at #5 Washington	L 2-3	25-22,28-30,25-19,26-28,14-16	2238
*Sep 28	at Washington State	w 3-0	25-17,25-13,25-15	926
*Oct 05	ARIZONA STATE	w 3-0	25-22,25-13,25-15	903
*Oct 07	ARIZONA	w 3-0	25-16,25-20,27-25	765
*Oct 12	at #4 Stanford	L 2-3	23-25,25-19,26-28,25-17,14-16	3361
*Oct 14	at California	w 3-0	25-18,25-21,25-18	1530
*Oct 17	UTAH	w 3-0	25-22,25-21,25-18	651
*Oct 19	COLORADO	w 3-0	25-20,25-16,26-24	656
*Oct 26	WASHINGTON STATE	w 3-0	25-12,28-26,25-22	852
*Oct 28	#5 WASHINGTON	w 3-1	25-18,25-22,22-25,28-26	1055
*Nov 02	at Arizona	L 0-3	22-25,16-25,24-26	1128
*Nov 03	at Arizona State	w 3-1	25-21,25-14,24-26,25-16	1220
*Nov 09	at Colorado	w 3-0	25-15,25-22,25-12	1257
*Nov 10	at Utah	w 3-2	25-19,21-25,25-13,19-25,15-13	644
*Nov 15	CALIFORNIA	w 3-0	25-16,25-22,25-18	802
*Nov 16	#1 STANFORD	L 1-3	22-25,18-25,25-15,25-27	3571
*Nov 20	at #6 Oregon	L 0-3	24-26,23-25,21-25	1964
*Nov 23	#4 USC	w 3-1	19-25,25-23,25-17,25-19	3022

! - UCSB Invitational
 @ - Verizon Volleyball Challenge

Record in 3-set matches:14-2 • Record in 4-set matches:6-2 • Record in 5-set matches:2-3



2012 UCLA Women's Volleyball
UCLA Combined Team Statistics (as of Nov 23, 2012)
Conference matches



RECORD:	OVERALL	HOME	AWAY	NEUTRAL
ALL GAMES	14-6	9-1	5-5	0-0
CONFERENCE	14-6	9-1	5-5	0-0
NON-CONFERENCE	0-0	0-0	0-0	0-0

#	Player	sp	Attack					Set		Serve			re	Dig		Blocking						points
			k	k/s	e	ta	pct	a	a/s	sa	se	sa/s		dig	dig/s	bs	ba	total	blk/s	be	bhe	
3	Love, Tabi	71	342	4.82	100	834	.290	5	0.07	6	9	0.08	-	78	1.10	4	32	36	0.51	4	1	368.0
11	Kidder, Rachael	71	294	4.14	109	736	.251	8	0.11	7	7	0.10	-	81	1.14	8	35	43	0.61	5	0	326.5
17	Lowe, Karsta	46	76	1.65	37	153	.255	1	0.02	0	4	0.00	-	14	0.30	0	17	17	0.37	1	0	84.5
2	Reeves, Kelly	71	112	1.58	34	259	.301	22	0.31	10	15	0.14	-	179	2.52	2	21	23	0.32	1	1	134.5
13	Nightingale, Zoe	71	111	1.56	28	229	.362	6	0.08	2	2	0.03	-	15	0.21	12	91	103	1.45	7	0	170.5
12	Aquino, Mariana	64	76	1.19	17	156	.378	10	0.16	14	18	0.22	-	35	0.55	3	56	59	0.92	11	0	121.0
15	Boland, Hannah	11	13	1.18	5	26	.308	2	0.18	0	1	0.00	-	1	0.09	1	2	3	0.27	3	1	15.0
5	Strehlow, Becca	45	38	0.84	10	62	.452	489	10.87	5	5	0.11	-	82	1.82	1	21	22	0.49	6	4	54.5
9	Moenoa, Megan	39	19	0.49	6	42	.310	408	10.46	8	10	0.21	-	83	2.13	2	23	25	0.64	7	2	40.5
7	Klineman, Maddy	5	1	0.20	1	6	.000	0	0.00	0	0	0.00	-	0	0.00	0	1	1	0.20	0	0	1.5
14	Norton, Meg	69	2	0.03	3	10	-.100	5	0.07	12	4	0.17	-	140	2.03	0	0	0	0.00	0	0	14.0
10	Todorovic, Bojana	70	2	0.03	1	3	.333	62	0.89	9	15	0.13	-	275	3.93	0	0	0	0.00	0	1	11.0
6	Drolson, Karly	19	0	0.00	0	1	.000	3	0.16	1	1	0.05	-	22	1.16	0	0	0	0.00	0	0	1.0
19	Fincher, Phelix	1	0	0.00	0	0	.000	0	0.00	0	0	0.00	-	0	0.00	0	0	0	0.00	0	0	0.0
	TEAM	-	-	-	-	-	-	-	-	-	-	-	-	-	-	-	-	-	-	-	-	-
	UCLA	71	1086	15.30	351	2517	.292	1021	14.38	74	91	1.04	46	1005	14.15	33	299	182.5	2.57	45	10	1342.5
	Opponents	71	941	13.25	384	2496	.223	884	12.45	46	126	0.65	74	914	12.87	26	242	147.0	2.07	33	10	1134.0

Team Statistics	UCLA	OPP
ATTACK		
Kills	1086	941
Errors	351	384
Total Attacks	2517	2496
Attack Pct	.292	.223
Kills/Set	15.3	13.3
SET		
Assists	1021	884
Assists/Set	14.4	12.5
SERVE		
Aces	74	46
Errors	91	126
Aces/Set	1.0	0.6
SERVE RECEPTIONS		
Errors	46	74
Errors/Set	0.6	1.0
DEFENSE		
Digs	1005	914
Digs/Set	14.2	12.9
BLOCKING		
Block Solo	33	26
Block Assist	299	242
Total Blocks	182.5	147.0
Blocks/Set	2.6	2.1
Block Errors	45	33
Ball handling errors	10	10
ATTENDANCE		
Total	13420	17980
Dates/Avg Per Date	10/1342	10/1798
Neutral site #/Avg	0/0	
Current win streak	1	-
Home win streak	1	-

Date	Opponent	Score	Score by set	Att.
*Sep 19	at #2 USC	L 1-3	26-28,20-25,26-24,17-25	3712
*Sep 21	OREGON STATE	W 3-0	25-14,25-18,25-17	1143
*Sep 26	at #5 Washington	L 2-3	25-22,28-30,25-19,26-28,14-16	2238
*Sep 28	at Washington State	W 3-0	25-17,25-13,25-15	926
*Oct 05	ARIZONA STATE	W 3-0	25-22,25-13,25-15	903
*Oct 07	ARIZONA	W 3-0	25-16,25-20,27-25	765
*Oct 12	at #4 Stanford	L 2-3	23-25,25-19,26-28,25-17,14-16	3361
*Oct 14	at California	W 3-0	25-18,25-21,25-18	1530
*Oct 17	UTAH	W 3-0	25-22,25-21,25-18	651
*Oct 19	COLORADO	W 3-0	25-20,25-16,26-24	656
*Oct 26	WASHINGTON STATE	W 3-0	25-12,28-26,25-22	852
*Oct 28	#5 WASHINGTON	W 3-1	25-18,25-22,22-25,28-26	1055
*Nov 02	at Arizona	L 0-3	22-25,16-25,24-26	1128
*Nov 03	at Arizona State	W 3-1	25-21,25-14,24-26,25-16	1220
*Nov 09	at Colorado	W 3-0	25-15,25-22,25-12	1257
*Nov 10	at Utah	W 3-2	25-19,21-25,25-13,19-25,15-13	644
*Nov 15	CALIFORNIA	W 3-0	25-16,25-22,25-18	802
*Nov 16	#1 STANFORD	L 1-3	22-25,18-25,25-15,25-27	3571
*Nov 20	at #6 Oregon	L 0-3	24-26,23-25,21-25	1964
*Nov 23	#4 USC	W 3-1	19-25,25-23,25-17,25-19	3022

! - UCSB Invitational
 @ - Verizon Volleyball Challenge

Record in 3-set matches: 10-2
 Record in 4-set matches: 3-2
 Record in 5-set matches: 1-2

2012 MATCH-BY-MATCH LEADERS

DATE	OPPONENT	RESULT	KILLS	ASSISTS	SERVICE ACES	DIGS	BLOCKS	POINTS
Aug. 24	vs. Notre Dame	W, 3-1	Kidder 18	Moenoa 35	Todorovic 2	Todorovic 16	Nightingale 6	Kidder 19.0
Aug. 25	at #4 Nebraska	L, 2-3	Love 20	Strehlow 46	None	Strehlow 23	Aquino 5	Love 23.5
Aug. 31	vs. Northeastern	W, 3-0	Lowe 12	Strehlow 22	Lowe/Norton/Reeves/Todorovic 1	Lowe/Todorovic 8	Nightingale 5	Lowe 14.5
Sept. 1	at UC Santa Barbara	W, 3-1	Kidder/Lowe 14	Moenoa 31	Aquino/Reeves 2	Norton 14	Aquino/Lowe 6	Lowe 18.0
Sept. 7	vs. Idaho	W, 3-0	Kidder/Love 11	Strehlow 37	Reeves 3	Strehlow 8	Nightingale/Strehlow 2	Kidder 12.0
Sept. 8	vs. San Diego State	W, 3-0	Kidder 13	Moenoa 26	Aquino 2	Todorovic 11	Nightingale 5	Kidder 13.0
Sept. 9	at #9 Hawai'i	W, 3-1	Love 26	Moenoa 44	Aquino/Kidder/Moenoa/Todorovic 1	Todorovic 20	Nightingale 7	Love 29.5
SEPT. 12	#18 PEPPERDINE	W, 3-0	LOVE 16	STREHLOW 37	REEVES/STREHLOW/TODOROVIC 1	TODOROVIC 15	KIDDER/NIGHTINGALE 3	KIDDER/LOVE 16.0
Sept. 15	at Colorado State	W, 3-2	Love 24	Moenoa 45	Kidder 1	Todorovic 20	Nightingale 7	Love 28.0
Sept. 19	at #2 USC	L, 1-3	Kidder 18	Strehlow 52	Aquino 1	Todorovic 22	Aquino/Kidder/Nightingale 2	Kidder 19.0
SEPT. 21	OREGON STATE	W, 3-0	KIDDER 14	STREHLOW 37	REEVES 2	TODOROVIC 17	NIGHTINGALE 6	KIDDER 16.5
Sept. 26	at #5 Washington	L, 2-3	Love 25	Moenoa 40	Aquino 2	Todorovic 19	Nightingale 8	Love 26.5
Sept. 28	at Washington State	W, 3-0	Kidder 18	Moenoa 41	Kidder/Nightingale/Norton 1	Todorovic 11	Nightingale 4	Kidder 20.0
OCT. 5	ARIZONA STATE	W, 3-0	LOVE 15	MOENOA 33	KIDDER/TODOROVIC 1	REEVES/TODOROVIC 6	AQUINO 6	LOVE 17.5
OCT. 7	ARIZONA	W, 3-0	KIDDER/LOVE 13	MOENOA 28	MOENOA 3	REEVES/TODOROVIC 6	NIGHTINGALE 7	KIDDER 15.5
Oct. 12	at #4 Stanford	L, 2-3	Kidder/Love 25	Moenoa 66	Moenoa 2	Todorovic 22	Nightingale 7	Kidder 27.5
Oct. 14	at California	W, 3-0	Love 16	Moenoa 24	Aquino 4	Todorovic 14	Nightingale 6	Love 18.5
OCT. 17	UTAH	W, 3-0	LOVE 18	STREHLOW 41	STREHLOW 3	STREHLOW 11	AQUINO/LOVE 2	LOVE 20.0
OCT. 19	COLORADO	W, 3-0	LOVE 14	MOENOA 22	MOENOA/NORTON/REEVES 1	TODOROVIC 10	NIGHTINGALE 7	KIDDER 15.5
OCT. 26	WASHINGTON STATE	W, 3-0	LOVE 24	MOENOA 34	AQUINO 1	TODOROVIC 16	AQUINO 8	LOVE 24.0
OCT. 28	#5 WASHINGTON	W, 3-1	LOVE 25	MOENOA 36	REEVES 1	TODOROVIC 26	NIGHTINGALE 4	LOVE 26.0
Nov. 2	at Arizona	L, 0-3	Love 11	Moenoa 30	Norton/Reeves 1	Todorovic 9	Nightingale 2	Love 11.5
Nov. 3	at Arizona State	W, 3-1	Love 24	Strehlow 47	Love 2	Todorovic 17	Nightingale 7	Love 28.0
Nov. 9	at Colorado	W, 3-0	Love 17	Strehlow 44	Norton/Todorovic 1	Todorovic 9	Nightingale/Strehlow 3	Love 17.5
Nov. 10	at Utah	W, 3-2	Kidder 19	Strehlow 52	Aquino/Todorovic 2	Todorovic 15	Nightingale 8	Kidder 20.0
NOV. 15	CALIFORNIA	W, 3-0	LOVE 21	STREHLOW 49	NONE	LOVE 11	AQUINO 3	LOVE 21.5
NOV. 16	#1 STANFORD	L, 1-3	KIDDER 21	STREHLOW 45	LOVE/TODOROVIC 2	TODOROVIC 22	LOVE/NIGHTINGALE 3	KIDDER 22.0
Nov. 20	at #6 Oregon	L, 0-3	Love 16	Moenoa 19	Aquino/Drolson 1	Reeves 13	Aquino 5	Love 17.0
NOV. 23	#4 USC	W, 3-1	KIDDER 18	MOENOA 32	KIDDER/MOENOA 1	REEVES/TODOROVIC 18	NIGHTINGALE 14	KIDDER 21.0
NOV. 30	LIU BROOKLYN							
DEC. 1	SAN DIEGO/MICHIGAN STATE							

Team Leader in Kills: Tabi Love 19, Rachael Kidder 12, Karsta Lowe 2.

Team Leader in Assists: Megan Moenaa 17, Becca Strehlow 12.

Team Leader in Aces: Mariana Aquino 9, Kelly Reeves 8, Bojana Todorovic 8, Rachael Kidder 5, Megan Moenaa 5, Meg Norton 5, Tabi Love 2, Becca Strehlow 2, Karly Drolson 1, Karsta Lowe 1, Zoë Nightingale 1.

Team Leader in Digs: Bojana Todorovic 23, Kelly Reeves 4, Becca Strehlow 3, Tabi Love 1, Karsta Lowe 1, Meg Norton 1.

Team Leader in Blocks: Zoë Nightingale 22, Mariana Aquino 8, Rachael Kidder 2, Tabi Love 2, Becca Strehlow 2, Karsta Lowe 1.

Team Leader in Points: Tabi Love 15, Rachael Kidder 13, Karsta Lowe 2.

2012 UCLA RECORD ...

Overall:	22-7	Leading in Hitting Pct:	22-2
At Home:	10-1	Trailing in Hitting Pct:	0-5
On Road:	8-6	Tied in Hitting Pct:	0-0
At Neutral Sites:	4-0	Hitting .300 or Better:	16-0
vs. Pac-12:	14-6	Hitting .250-.299:	3-1
vs. Pac-12 at Home:	9-1	Hitting .200-.249:	3-4
vs. Pac-12 on Road:	5-5	Hitting .150-.199:	0-1
vs. '11 NCAA Tournament Teams:	8-7	Hitting .149 or Below:	0-1
vs. Ranked Teams:	4-6	Opponent Hits .300 or Better:	0-1
In Three Sets:	14-2	Opponent Hits .250-.299:	4-4
In Four Sets:	6-2	Opponent Hits .200-.249:	3-2
In Five Sets:	2-3	Opponent Hits .150-.199:	6-0
On Tuesday:	0-1	Opponent Hits .149 or Below:	9-0
On Wednesday:	2-2	Leading in Service Aces:	13-4
On Thursday:	1-0	Trailing in Service Aces:	6-2
On Friday:	10-3	Tied in Service Aces:	3-1
On Saturday:	5-1	Leading in Digs:	18-2
On Sunday:	4-0	Trailing in Digs:	4-5
When Winning Set 1:	19-1	Tied in Digs:	0-0
When Losing Set 1:	3-6	Leading in Blocks:	19-2
When Winning Set 2:	19-1	Trailing in Blocks:	3-5
When Losing Set 2:	3-6	Tied in Blocks:	0-0
When Winning Set 3:	21-4		
When Losing Set 3:	1-3		
When Winning Set 4:	6-2		
When Losing Set 4:	2-3		
Leading in Kills:	20-2		
Trailing in Kills:	1-5		
Tied in Kills:	1-0		
Leading in Errors:	4-5		
Trailing in Errors:	18-1		
Tied in Errors:	0-1		

2012 ATTENDANCE

	DATES	TOTAL	AVG
Home:	11	14,262	1,297
Road:	14	37,002	2,643
Neutral:	4	17,646	4,412
Pac-12 Total:	20	31,400	1,570
Pac-12 Home:	10	13,420	1,342
Pac-12 Road:	10	17,980	1,798
Overall Total:	29	68,910	2,376

2012 DOUBLE-DOUBLES AND MISCELLANEOUS STATS

Rachael Kidder (Season: 4; Career: 14)	
14 kills, 10 digs at Nebraska (Aug. 25)	
16 kills, 12 digs at Hawai'i (Sept. 9)	
13 kills, 11 digs at Colorado State (Sept. 15)	
25 kills, 10 digs at Stanford (Oct. 12)	
Becca Strehlow (Season: 3; Career: 3)	
46 assists, 23 digs at Nebraska (Aug. 25)	
41 assists, 11 digs vs. Utah (Oct. 17)	
45 assists, 10 digs vs. Stanford (Nov. 16)	
Kelly Reeves (Season: 2; Career: 10)	
10 kills, 11 digs vs. Notre Dame (Aug. 24)	
14 kills, 15 digs at Stanford (Oct. 12)	
Tabi Love (Season: 2; Career: 2)	
24 kills, 11 digs at Arizona State (Nov. 3)	
21 kills, 11 digs vs. California (Nov. 15)	
Megan Moenaa (Season: 2; Career: 2)	
66 assists, 16 digs at Stanford (Oct. 12)	
34 assists, 12 digs vs. Washington State (Oct. 26)	
Karsta Lowe (Season: 1; Career: 1)	
14 kills, 11 digs at UC Santa Barbara (Sept. 1)	
DOUBLE-FIGURE KILLS	SEASON/CAREER
Tabi Love	27/78 (36 at MINN)
Rachael Kidder	25/77
Karsta Lowe	6/7
Kelly Reeves	2/14
Zoë Nightingale	2/5
Mariana Aquino	0/3
Meg Norton	0/2

20-PLUS KILLS	SEASON/CAREER
Tabi Love	9/14 (5 at MINN)
Rachael Kidder	2/16
DOUBLE-FIGURE DIGS	SEASON/CAREER
Bojana Todorovic	20/60
Kelly Reeves	12/44
Meg Norton	7/15
Rachael Kidder	4/14
Becca Strehlow	3/3
Karly Drolson/Megan Moenaa/Tabi Love	2/2
Karsta Lowe	1/1
20-PLUS DIGS	SEASON/CAREER
Bojana Todorovic	6/8
Becca Strehlow	1/1
50+ ASSISTS MATCHES	SEASON/CAREER
Becca Strehlow	2/2
Megan Moenaa	1/1
THREE+ ACES MATCHES	SEASON/CAREER
Kelly Reeves	1/2
Mariana Aquino/Megan Moenaa/Becca Strehlow	1/1
Bojana Todorovic	0/9
Rachael Kidder/Meg Norton	0/1
FIVE+ BLOCKS MATCHES	SEASON/CAREER
Zoë Nightingale	15/18
Mariana Aquino	9/20
Rachael Kidder	3/11
Tabi Love	1/5 (2 at MINN)
Karsta Lowe/Megan Moenaa/Kelly Reeves	1/2
Becca Strehlow	1/1

2012 INDIVIDUAL AND TEAM MATCH HIGHS

INDIVIDUAL	STATISTIC	TEAM
.643 (10-1-14), Zoë Nightingale at Colorado (Nov. 9)	HITTING PERCENTAGE (K-E-TA) (MIN. 10 KILLS)	.537 (58-7-95), vs. California (Nov. 15)
.640 (17-1-25), Tabi Love at Colorado (Nov. 9)		.530 (52-8-83), at Colorado (Nov. 9)
26, Tabi Love at Hawai'i (Sept. 9)	KILLS	78, at Stanford (Oct. 12)
25, Tabi Love, Three times and Rachael Kidder, One time		75, at Washington (Sept. 26)
24, Tabi Love vs. Washington State (Oct. 26)	KILLS (3 SETS)	58, vs. California (Nov. 15)
21, Tabi Love vs. California (Nov. 15)		52, vs. Washington State (Oct. 26) and at Colorado (Nov. 9)
26, Tabi Love at Hawai'i (Sept. 9)	KILLS (4 SETS)	70, vs. Washington (Oct. 28)
25, Tabi Love vs. Washington (Oct. 28)		63, at USC (Sept. 19)
25, Tabi Love at Washington (Sept. 26) and at Stanford (Oct. 12)	KILLS (5 SETS)	78, at Stanford (Oct. 12)
25, Rachael Kidder at Stanford (Oct. 12)		75, at Washington (Sept. 26)
83, Rachael Kidder at Stanford (Oct. 12)	TOTAL ATTACKS	219, at Stanford (Oct. 12)
73, Tabi Love at Stanford (Oct. 12)		189, at Washington (Sept. 26)
51, Tabi Love vs. Washington State (Oct. 26)	TOTAL ATTACKS (3 SETS)	118, at Oregon (Nov. 20)
45, Tabi Love at Arizona (Nov. 2)		116, vs. Washington State (Oct. 26)
71, Tabi Love vs. Washington (Oct. 28)	TOTAL ATTACKS (4 SETS)	165, vs. Stanford (Nov. 16)
60, Rachael Kidder vs. Notre Dame (Aug. 24)		157, vs. Washington (Oct. 28)
83, Rachael Kidder at Stanford (Oct. 12)	TOTAL ATTACKS (5 SETS)	219, at Stanford (Oct. 12)
73, Tabi Love at Stanford (Oct. 12)		189, at Washington (Sept. 26)
66, Megan Moenoa at Stanford (Oct. 12)	ASSISTS	75, at Stanford (Oct. 12)
52, Becca Strehlow at USC (Sept. 19) and at Utah (Nov. 10)		73, at Washington (Sept. 26)
49, Becca Strehlow vs. California (Nov. 15)	ASSISTS (3 SETS)	52, vs. California (Nov. 15)
44, Becca Strehlow at Colorado (Nov. 9)		48, vs. Washington State (Oct. 26)
52, Becca Strehlow at USC (Sept. 19)	ASSISTS (4 SETS)	66, vs. Washington (Oct. 28)
47, Becca Strehlow at Arizona State (Nov. 3)		62, at USC (Sept. 19)
66, Megan Moenoa at Stanford (Oct. 12)	ASSISTS (5 SETS)	75, at Stanford (Oct. 12)
52, Becca Strehlow at Utah (Nov. 10)		73, at Washington (Sept. 26)
26, Bojana Todorovic vs. Washington (Oct. 28)	DIGS	88, at Stanford (Oct. 12)
23, Becca Strehlow at Nebraska (Aug. 25)		74, at Nebraska (Aug. 25)
17, Bojana Todorovic vs. Oregon State (Sept. 21)	DIGS (3 SETS)	55, vs. Washington State (Oct. 26)
16, Bojana Todorovic vs. Washington State (Oct. 26)		47, at California (Oct. 14) and at Oregon (Nov. 20)
26, Bojana Todorovic vs. Washington (Oct. 28)	DIGS (4 SETS)	72, vs. USC (Nov. 23)
22, Bojana Todorovic at USC (Sept. 19) and vs. Stanford (Nov. 16)		71, vs. Washington (Oct. 28)
23, Becca Strehlow at Nebraska (Aug. 25)	DIGS (5 SETS)	88, at Stanford (Oct. 12)
22, Bojana Todorovic at Stanford (Oct. 12)		74, at Nebraska (Aug. 25)
4, Mariana Aquino at California (Oct. 14)	SERVICE ACES	10, at California (Oct. 14)
3, Kelly Reeves vs. Idaho (Sept. 7), Megan Moenoa vs. Arizona (Oct. 7) and Becca Strehlow vs. Utah (Oct. 17)		8, vs. Utah (Oct. 17)
14 (3-11), Zoë Nightingale vs. USC (Nov. 23)	BLOCKS (BS-BA)	18.0, at Colorado State (Sept. 15)
8, Zoë Nightingale, Two times and Mariana Aquino, One time		17.5, vs. USC (Nov. 23)

2012 MATCH-BY-MATCH COMPARISON (UCLA/OPP)

DATE	OPPONENT	RESULT	K	E	TA	PCT	A	SA	SE	RE	DIG	BS	BA	BE	TOT	BHE
Aug. 24	vs. Notre Dame	W, 3-1	51/51	20/29	151/152	.205/.145	48/49	5/0	12/5	0/5	57/72	3/0	18/8	2/4	12.0/4.0	0/2
Aug. 25	at #4 Nebraska	L, 2-3	62/69	22/31	176/184	.227/.207	60/66	0/3	9/10	3/0	74/85	7/2	16/16	4/5	15.0/10.0	1/2
Aug. 31	vs. Northeastern	W, 3-0	41/43	7/24	99/113	.343/.168	39/40	4/4	5/5	4/4	36/45	6/0	15/5	3/0	13.5/2.5	0/0
Sept. 1	at UC Santa Barbara	W, 3-1	58/50	14/27	143/160	.308/.144	54/48	5/8	6/3	8/5	66/63	2/1	20/8	0/0	12.0/5.0	0/0
Sept. 7	vs. Idaho	W, 3-0	48/26	7/15	79/80	.519/.138	42/23	6/1	7/5	1/6	33/17	1/1	8/6	0/0	5.0/4.0	1/1
Sept. 8	vs. San Diego State	W, 3-0	37/30	9/20	80/90	.350/.111	30/27	5/2	7/10	2/5	32/26	3/1	8/8	0/1	7.0/5.0	0/2
Sept. 9	at #9 Hawai'i	W, 3-1	61/55	18/28	146/160	.295/.169	56/53	4/2	8/9	2/4	67/59	3/1	27/8	3/2	16.5/5.0	0/1
SEPT. 12	#18 PEPPERDINE	W, 3-0	51/34	9/14	100/103	.420/.194	47/34	3/0	6/7	0/3	46/37	1/1	8/4	4/0	5.0/3.0	0/0
Sept. 15	at Colorado State	W, 3-2	61/59	26/27	160/170	.219/.188	59/53	1/5	7/9	5/1	71/66	8/0	20/14	4/0	18.0/7.0	0/0
Sept. 19	at #2 USC	L, 1-3	63/64	20/17	145/151	.297/.311	62/60	1/6	11/8	6/1	62/58	1/2	6/8	1/0	4.0/6.0	0/0
SEPT. 21	OREGON STATE	W, 3-0	48/29	16/17	105/94	.305/.128	44/29	4/3	0/6	3/4	42/32	2/1	12/10	2/1	8.0/6.0	1/0
Sept. 26	at #5 Washington	L, 2-3	75/69	30/20	189/168	.238/.292	73/66	5/4	12/16	4/5	72/66	0/1	26/27	5/2	13.0/14.5	0/1
Sept. 28	at Washington State	W, 3-0	51/30	7/17	94/97	.468/.134	47/29	3/2	6/2	2/3	36/31	1/0	10/4	3/1	6.0/2.0	0/1
OCT. 5	ARIZONA STATE	W, 3-0	42/33	10/22	80/91	.400/.121	37/30	2/2	4/8	2/2	26/22	3/1	20/6	1/2	13.0/4.0	0/0
OCT. 7	ARIZONA	W, 3-0	43/42	12/18	93/93	.333/.258	40/38	6/2	5/9	2/6	27/32	0/5	18/4	4/0	9.0/7.0	0/1
Oct. 12	at #4 Stanford	L, 2-3	78/68	31/26	219/196	.215/.214	75/65	5/3	3/3	3/5	88/92	0/2	24/24	2/1	12.0/14.0	0/0
Oct. 14	at California	W, 3-0	45/39	15/14	99/104	.303/.240	42/39	10/1	1/6	1/10	47/35	1/1	14/12	2/1	8.0/7.0	0/0
OCT. 17	UTAH	W, 3-0	49/38	15/13	103/97	.330/.258	46/36	8/2	5/4	2/8	39/33	1/1	6/12	5/1	4.0/7.0	1/0
OCT. 19	COLORADO	W, 3-0	46/34	14/22	101/97	.317/.124	42/31	3/1	7/4	1/3	35/36	5/0	14/8	4/3	12.0/4.0	2/1
OCT. 26	WASHINGTON STATE	W, 3-0	52/36	13/18	116/119	.336/.151	48/33	1/2	2/6	2/1	55/42	0/0	22/10	3/2	11.0/5.0	1/0
OCT. 28	#5 WASHINGTON	W, 3-1	70/63	22/17	157/164	.306/.280	66/58	1/3	2/11	3/1	71/53	3/1	10/24	2/4	8.0/13.0	0/1
Nov. 2	at Arizona	L, 0-3	38/45	22/15	112/104	.143/.288	37/42	2/2	5/5	2/2	36/47	2/3	2/8	0/2	3.0/7.0	0/0
Nov. 3	at Arizona State	W, 3-1	56/47	19/32	133/148	.278/.101	55/45	5/3	7/5	3/5	61/52	5/0	22/14	0/3	16.0/7.0	1/1
Nov. 9	at Colorado	W, 3-0	52/37	8/17	83/87	.530/.230	47/33	2/1	2/4	1/2	27/21	0/1	10/6	3/0	5.0/4.0	1/0
Nov. 10	at Utah	W, 3-2	66/56	26/22	154/145	.260/.234	62/47	5/5	5/6	5/5	59/44	2/3	20/23	2/4	12.0/14.5	1/2
NOV. 15	CALIFORNIA	W, 3-0	58/42	7/13	95/97	.537/.299	52/41	0/1	3/3	1/0	37/26	1/0	10/8	3/5	6.0/4.0	1/0
NOV. 16	#1 STANFORD	L, 1-3	58/66	21/21	165/158	.224/.285	54/64	7/0	3/4	0/7	66/74	0/2	10/14	1/1	5.0/9.0	1/0
Nov. 20	at #6 Oregon	L, 0-3	41/50	20/19	118/123	.178/.252	38/48	2/0	5/6	0/2	47/53	2/1	16/8	2/0	10.0/5.0	0/0
NOV. 23	#4 USC	W, 3-1	55/53	23/24	156/163	.205/.178	54/50	2/3	3/10	3/2	72/65	4/1	27/12	0/0	17.5/7.0	0/2
NOV. 30	LIU BROOKLYN															
DEC. 1	SAN DIEGO/MICHIGAN STATE															

2011 - NCAA Finish (1st)**FIRST AND SECOND ROUNDS AT WOODEN CENTER**

Dec. 2	beat Maryland Eastern Shore, 3-0 (25-12, 25-12, 25-9)
Dec. 3	beat San Diego, 3-1 (25-16, 25-15, 22-25, 25-17)

REGIONALS IN LEXINGTON, KY.

Dec. 9	beat Penn State, 3-0 (25-20, 25-22, 25-21)
Dec. 10	beat Texas, 3-1 (19-25, 25-22, 25-22, 25-21)

NATIONAL SEMIFINALS/CHAMPIONSHIP IN SAN ANTONIO, TEXAS

Dec. 15	beat Florida State, 3-0 (25-16, 25-17, 25-21)
Dec. 17	beat Illinois, 3-1 (25-23, 23-25, 26-24, 25-16)

2010 - NCAA Finish (T-17th)**FIRST AND SECOND ROUNDS AT AUSTIN, TEXAS**

Dec. 3	beat American, 3-2 (26-28, 26-24, 23-25, 25-19, 15-11)
Dec. 4	lost to Texas, 1-3 (23-25, 25-20, 18-25, 24-26)

2009 - NCAA Finish (T-17th)**FIRST AND SECOND ROUNDS AT PAULEY PAVILION**

Dec. 4	beat Long Beach State, 3-0 (25-20, 25-20, 25-16)
Dec. 5	lost to Baylor, 1-3 (23-25, 22-25, 31-29, 19-25)

2008 - NCAA Finish (T-9th)**FIRST AND SECOND ROUNDS AT PAULEY PAVILION**

Dec. 5	beat LSU, 3-1 (25-19, 22-25, 25-20, 25-20)
Dec. 6	beat Duke, 3-0 (25-16, 25-19, 25-17)

REGIONALS IN AUSTIN, TEXAS

Dec. 12	lost to Texas, 1-3 (11-25, 25-22, 21-25, 21-25)
---------	-------------------------------------------------

2007 - NCAA Finish (T-5th)**FIRST AND SECOND ROUNDS IN CLEMSON, S.C.**

Nov. 30	beat Alabama A&M, 3-0 (30-9, 30-14, 30-13)
Dec. 1	beat Clemson, 3-1 (30-19, 30-21, 19-30, 30-22)

REGIONALS IN STANFORD, CALIF.

Dec. 7	beat Oregon, 3-1 (30-23, 30-19, 28-30, 30-24)
Dec. 8	lost to Stanford, 1-3 (30-28, 28-30, 26-30, 27-30)

2006 - NCAA Finish (T-3rd)**FIRST AND SECOND ROUNDS AT PAULEY PAVILION**

Dec. 1	beat UAB, 3-0 (30-24, 30-21, 30-23)
Dec. 2	beat Utah, 3-0 (30-24, 30-27, 30-26)

REGIONALS IN HONOLULU, HAWAII

Dec. 8	beat Oklahoma, 3-0 (30-22, 30-16, 30-26)
Dec. 9	beat Hawai'i, 3-0 (30-16, 30-23, 30-23)

NATIONAL SEMIFINALS IN OMAHA, NEB.

Dec. 14	lost to Nebraska, 1-3 (30-23, 28-30, 23-30, 28-30)
---------	----------------------------------------------------

2005 - NCAA Finish (T-9th)**FIRST AND SECOND ROUNDS AT PAULEY PAVILION**

Dec. 2	beat Kansas, 3-1 (30-14, 26-30, 30-17, 30-24)
Dec. 3	beat San Diego, 3-0 (30-24, 30-23, 30-19)

REGIONALS IN LINCOLN, NEB.

Dec. 9	lost to Nebraska, 1-3 (28-30, 23-30, 16-30)
--------	---------------------------------------------

2004 - NCAA Finish (T-5th)**FIRST AND SECOND ROUNDS AT PAULEY PAVILION**

Dec. 3	beat Loyola Marymount, 3-1 (30-28, 30-23, 27-30, 30-22)
Dec. 4	beat Long Beach State, 3-0 (31-29, 30-24, 30-27)

REGIONALS IN SEATTLE, WASH.

Dec. 10	beat Penn State, 3-1 (30-24, 22-30, 30-25, 30-28)
Dec. 11	lost to Washington, 2-3 (30-27, 19-30, 28-30, 30-24, 9-15)

2003 - NCAA Finish (T-5th)**FIRST AND SECOND ROUNDS AT PAULEY PAVILION**

Dec. 5	beat San Diego, 3-0 (30-20, 30-17, 30-24)
Dec. 6	beat UC Irvine, 3-0 (30-24, 30-28, 30-22)

REGIONALS IN LINCOLN, NEB.

Dec. 12	beat Nebraska, 3-1 (20-30, 30-27, 30-21, 30-23)
Dec. 13	lost to USC, 1-3 (30-24, 26-30, 17-30, 17-30)

2002 - NCAA Finish (T-17th)**FIRST AND SECOND ROUNDS IN MALIBU, CALIF.**

Dec. 5	beat Long Beach State, 3-0 (30-25, 30-27, 30-21)
Dec. 6	lost to Pepperdine, 1-3 (26-30, 30-23, 26-30, 26-30)

2001 - NCAA Finish (T-5th)**FIRST AND SECOND ROUNDS IN STATE COLLEGE, PA.**

Nov. 30	beat Pennsylvania, 3-0 (30-26, 30-25, 30-23)
Dec. 1	beat Penn State, 3-0 (30-11, 30-28, 30-18)

REGIONALS IN LONG BEACH, CALIF.

Dec. 6	beat Hawai'i, 3-1 (30-25, 30-28, 22-30, 30-22)
Dec. 7	lost to Long Beach State, 0-3 (25-30, 28-30, 21-30)

2000 - NCAA Finish (T-5th)**FIRST AND SECOND ROUNDS AT PAULEY PAVILION**

Dec. 2	beat Morgan State, 3-0 (15-4, 15-6, 15-5)
Dec. 3	beat Michigan St., 3-2 (15-7, 13-15, 14-16, 15-6, 15-9)

REGIONALS IN MADISON, WIS.

Dec. 8	beat Pacific, 3-1 (15-10, 10-15, 15-11, 15-11)
Dec. 9	lost to Wisconsin, 2-3 (7-15, 15-5, 14-16, 16-14, 12-15)

1999 - NCAA Finish (T-5th)**FIRST AND SECOND ROUNDS AT PAULEY PAVILION**

Dec. 4	beat Eastern Washington, 3-0 (15-5, 15-5, 17-15)
Dec. 5	beat Ohio State, 3-0 (15-10, 15-12, 15-10)

REGIONALS IN STATE COLLEGE, PA.

Dec. 9	beat Pepperdine, 3-0 (15-9, 15-12, 17-15)
Dec. 10	lost to Penn State, 0-3 (11-15, 9-15, 5-15)

1998 - NCAA Finish (T-17th)**FIRST AND SECOND ROUNDS IN SANTA BARBARA, CALIF.**

Dec. 5	beat Virginia, 3-1 (15-7, 15-6, 14-16, 15-5)
Dec. 6	lost to UC Santa Barbara, 1-3 (8-15, 15-8, 13-15, 11-15)

1997 - NCAA Finish (T-17th)**FIRST AND SECOND ROUNDS IN SANTA BARBARA, CALIF.**

Dec. 6	beat Pepperdine, 3-1 (15-10, 15-12, 14-16, 15-9)
Dec. 7	lost to UC Santa Barbara, 2-3 (8-15, 8-15, 15-6, 15-6, 14-16)

1995 - NCAA Finish (T-5th)**FIRST ROUND AT WOODEN CENTER**

Dec. 2	beat Ball State, 3-0 (15-4, 15-4, 15-7)
--------	-----------------------------------------

REGIONALS IN LINCOLN, NEB.

Dec. 8	beat Ohio State, 3-0 (15-6, 15-6, 15-9)
Dec. 9	lost to Nebraska, 0-3 (9-15, 7-15, 14-16)

1994 - NCAA Finish (2nd)**FIRST ROUND AT PAULEY PAVILION**

Dec. 3	beat Georgia Tech, 3-0 (15-7, 15-9, 15-8)
--------	-------------------------------------------

REGIONALS IN GAINESVILLE, FLA.

Dec. 8	beat Duke, 3-0 (15-3, 15-3, 15-4)
Dec. 9	beat Houston, 3-0 (15-5, 15-7, 15-12)

NATIONAL SEMIFINALS/CHAMPIONSHIP IN AUSTIN, TEX.

Dec. 15	beat Penn State, 3-2 (3-15, 15-4, 15-9, 5-15, 15-11)
Dec. 17	lost to Stanford, 1-3 (10-15, 15-5, 14-16, 13-15)

1993 - NCAA Finish (T-5th)**FIRST ROUND AT WOODEN CENTER**

Dec. 5	beat New Mexico, 3-0 (15-8, 15-3, 15-6)
--------	-----------------------------------------

REGIONALS AT WOODEN CENTER

Dec. 9	beat Stanford, 3-1 (15-11, 12-15, 15-5, 15-10)
Dec. 10	lost to BYU, 0-3 (14-16, 15-17, 11-15)

1992 - NCAA Finish (2nd)**FIRST ROUND AT WOODEN CENTER**

Dec. 4	beat Ball State, 3-0 (15-1, 15-4, 15-0)
--------	-----------------------------------------

REGIONALS AT PAULEY PAVILION

Dec. 11	beat Arizona State, 3-0 (15-3, 15-9, 15-3)
Dec. 12	beat BYU, 3-0 (15-5, 15-8, 15-9)

NAT'L SEMIFINALS/CHAMPIONSHIP IN ALBUQUERQUE, N.M.

Dec. 17	beat Florida, 3-0 (15-12, 15-12, 15-10)
Dec. 19	lost to Stanford, 1-3 (8-15, 9-15, 15-6, 10-15)

1991 - NCAA Finish (1st)**FIRST ROUND AT WOODEN CENTER**

Dec. 6	beat Pepperdine, 3-0 (15-3, 15-8, 15-11)
--------	------------------------------------------

REGIONALS IN STANFORD, CALIF.

Dec. 12	beat New Mexico, 3-0 (15-12, 15-10, 15-10)
Dec. 13	beat Stanford, 3-0 (15-2, 15-12, 16-14)

NATIONAL SEMIFINALS/CHAMPIONSHIP AT PAULEY PAVILION

Dec. 19	beat Ohio State, 3-0 (15-8, 15-8, 15-5)
Dec. 21	beat Long Beach St., 3-2 (12-15, 13-15, 15-12, 15-6, 15-11)

1990 - NCAA Finish (1st)**FIRST ROUND AT WOODEN CENTER**

Dec. 1	beat Gonzaga, 3-0 (15-6, 15-7, 15-12)
--------	---------------------------------------

REGIONALS AT WOODEN CENTER

Dec. 7	beat New Mexico, 3-1 (15-8, 11-15, 15-3, 16-14)
Dec. 8	beat Stanford, 3-0 (15-10, 15-8, 15-12)

NAT'L SEMIFINALS/CHAMPIONSHIP IN COLLEGE PARK, MD.

Dec. 13	beat LSU, 3-0 (15-13, 15-10, 15-6)
Dec. 15	beat Pacific, 3-0 (15-9, 15-12, 15-7)

1989 - NCAA Finish (T-3rd)**FIRST ROUND AT WOODEN CENTER**

Dec. 1	beat Pepperdine, 3-1 (9-15, 15-10, 15-6, 15-4)
--------	------------------------------------------------

REGIONALS AT PAULEY PAVILION

Dec. 8	beat Arizona, 3-0 (15-11, 16-14, 16-14)
Dec. 9	beat Wyoming, 3-0 (15-8, 15-10, 15-5)

NATIONAL SEMIFINALS IN HONOLULU, HAWAII

Dec. 14	lost to Nebraska, 0-3 (13-15, 11-15, 6-15)
---------	--------------------------------------------

1988 - NCAA Finish (T-3rd)**FIRST ROUND AT WOODEN CENTER**

Dec. 2	beat California, 3-0 (15-10, 15-8, 15-12)
--------	-------------------------------------------

REGIONALS AT PAULEY PAVILION

Dec. 9	beat BYU, 3-0 (15-7, 15-7, 15-13)
Dec. 10	beat Washington, 3-0 (15-7, 16-14, 15-9)

NATIONAL SEMIFINALS IN MINNEAPOLIS, MINN.

Dec. 15	lost to Texas, 0-3 (14-16, 11-15, 13-15)
---------	------------------------------------------

1987 - NCAA Finish (T-9th)**FIRST ROUND AT WOODEN CENTER**

Dec. 4	beat California, 3-1 (15-12, 11-15, 15-11, 15-2)
--------	--------------------------------------------------

REGIONALS IN STANFORD, CALIF.

Dec. 12	lost to BYU, 1-3 (15-17, 4-15, 15-11, 12-15)
---------	----------------------------------------------

1986 - NCAA Finish (T-17th)**FIRST ROUND AT WOODEN CENTER**

Dec. 6	lost to Loyola Marymount, 2-3 (15-1, 15-9, 8-15, 12-15, 14-16)
--------	----------------------------------------------------------------

1985 - NCAA Finish (4th)**REGIONALS IN AUSTIN, TEXAS**

Dec. 13	beat Georgia, 3-0 (15-3, 15-5, 15-8)
Dec. 14	beat Texas, 3-0 (15-8, 15-10, 15-11)

NAT'L SEMIFINALS/3RD-PLACE MATCH IN KALAMAZOO, MICH.

Dec. 20	lost to Pacific, 1-3 (11-15, 7-15, 15-9, 15-17)
Dec. 22	lost to USC, 2-3 (7-15, 12-15, 15-8, 15-11, 3-15)

1984 - NCAA Finish (1st)**REGIONALS IN AUSTIN, TEXAS**

Dec. 6	beat Duke, 3-0 (15-4, 15-3, 15-8)
Dec. 9	beat Texas, 3-1 (15-17, 15-11, 15-13, 16-14)

NATIONAL SEMIFINALS/CHAMPIONSHIP AT PAULEY PAVILION

Dec. 14	beat San Jose State, 3-0 (15-6, 15-2, 15-4)
Dec. 16	beat Stanford, 3-2 (15-12, 7-15, 15-10, 9-15, 15-13)

1983 - NCAA Finish (2nd)**REGIONALS IN WEST LAFAYETTE, IND.**

Dec. 8	beat Penn State, 3-0 (15-1, 16-14, 15-11)
Dec. 9	beat Western Michigan, 3-0 (15-6, 15-8, 15-12)

NATIONAL SEMIFINALS/CHAMPIONSHIP IN LEXINGTON, KY.

Dec. 17	beat Pacific, 3-2 (15-5, 15-12, 15-17, 9-15, 15-7)
Dec. 19	lost to Hawai'i, 0-3 (13-15, 4-15, 10-15)

1982 - NCAA Finish (T-5th)**FIRST ROUND AT PAULEY PAVILION**

Dec. 4	beat Louisville, 3-0 (15-6, 15-4, 15-8)
--------	-----------------------------------------

REGIONALS AT PAULEY PAVILION

Dec. 9	beat BYU, 3-0 (15-5, 15-4, 18-16)
Dec. 10	lost to San Diego State, 1-3 (7-15, 10-15, 15-6, 6-15)

1981 - NCAA Finish (2nd)**REGIONALS IN PROVO, UTAH**

Dec. 11	beat Purdue, 3-2 (15-11, 6-15, 11-15, 15-8, 15-3)
Dec. 12	beat Stanford, 3-2 (4-15, 15-10, 15-10, 10-15, 15-3)

NATIONAL SEMIFINALS/CHAMPIONSHIP AT PAULEY PAVILION

Dec. 18	beat San Diego State, 3-1 (4-15, 15-8, 15-9, 15-8)
Dec. 20	lost to USC, 2-3 (15-9, 7-15, 15-10, 13-15, 7-15)



Volleyball Box Score
2011 UCLA Women's Volleyball
San Diego vs #9 UCLA (Dec 03, 2011 at Los Angeles, Calif.)



##	San Diego	S	Attack				Pct	Ast	Serve			RE	Dig	Block			BHE	Pts
			K	E	TA	SA			SE	BS	BA			BE				
2	FERRARI, Chloe	4	12	4	24	.333	0	0	1	0	1	1	2	0	0	14.0		
4	LOZIC, Sandra	4	9	4	41	.122	0	0	0	0	12	0	0	1	0	9.0		
8	ALVEY, Rachel	4	1	1	5	.000	32	1	0	0	7	0	1	1	0	2.5		
9	HOEKMAN, Katie	4	4	6	20	-.100	1	0	0	0	0	0	0	1	0	4.0		
11	BAIRD, Carrie	4	5	5	24	.000	0	0	0	0	6	0	0	0	0	5.0		
16	STAAB, Shelby	2	4	4	16	.000	0	0	0	0	0	1	1	0	0	5.5		
1	BONOMI, Jianna	2	0	1	1	-1.000	6	0	0	0	2	0	0	0	0	0.0		
3	BROWN, Alaysia	2	3	1	8	.250	0	0	0	0	1	0	0	0	0	3.0		
5	OLIVEIRA, C'era	2	0	0	0	.000	1	0	0	0	1	0	0	0	0	0.0		
7	TATSCH, Amber	4	9	6	26	.115	1	1	2	0	4	0	0	0	0	10.0		
10	ANDERSON, Kandiss	4	0	0	0	.000	3	0	1	0	27	0	0	0	0	0.0		
13	BANKER, Alexa	1	1	0	3	.333	0	0	0	0	0	0	0	0	0	1.0		
Totals		4	48	32	168	.095	44	2	4	0	61	2	4	3	0	54.0		

Team Attack By Set

Set	K	E	TA	Pct	Sideout	Pct
1	9	7	36	.056	12-24	50%
2	10	11	39	-.026	10-25	40%
3	16	6	40	.250	15-22	68%
4	13	8	53	.094	11-25	43%
48-96						50%

TOTAL TEAM BLOCKS: 4.0

SET SCORES

San Diego (1)
 UCLA (3)

1	2	3	4	Team Records:
16	15	25	17	28-5
25	25	22	25	26-6

##	UCLA	S	Attack				Pct	Ast	Serve			RE	Dig	Block			BHE	Pts
			K	E	TA	SA			SE	BS	BA			BE				
2	Reeves, Kelly	4	7	4	29	.103	2	0	1	0	9	0	2	0	0	8.0		
5	Van Orden, Lauren	4	5	0	8	.625	47	0	2	0	8	1	2	0	0	7.0		
10	Todorovic, Bojana	4	2	1	5	.200	1	0	0	1	13	0	0	0	0	2.0		
11	Kidder, Rachael	4	17	8	49	.184	1	0	0	0	4	1	5	1	0	20.5		
12	Aquino, Mariana	4	9	1	14	.571	0	0	0	0	2	0	11	0	0	14.5		
13	Nightingale, Zoe	4	2	2	8	.000	0	0	0	0	3	0	1	2	0	2.5		
3	Love, Tabi	4	17	4	37	.351	0	0	0	0	1	2	4	0	0	21.0		
4	Sage, Sara	1	2	0	3	.667	0	0	0	0	2	0	1	0	0	2.5		
6	Gera, Lainey	4	0	0	0	.000	4	0	0	1	23	0	0	0	0	0.0		
14	Norton, Meg	3	0	0	0	.000	0	0	0	0	6	0	0	0	0	0.0		
Totals		4	61	20	153	.268	55	0	3	2	71	4	26	3	0	78.0		

Team Attack By Set

Set	K	E	TA	Pct	Sideout	Pct
1	18	6	36	.333	13-17	76%
2	12	4	31	.258	10-15	66%
3	14	8	43	.140	15-25	60%
4	17	2	43	.349	11-17	64%
49-74						66%

TOTAL TEAM BLOCKS: 17.0

Site: Los Angeles, Calif. (Wooden Center)

Date: Dec 03, 2011 Attend: 947 Time: 1:54

Referees: Kevin Cull, Tony Chan

UCLA ADVANCES TO THE REGIONAL SEMI-FINALS AND WILL
 PLAY PENN STATE IN LEXINGTON, KY. NEXT FRIDAY.

	1	2	3	4	Total
Tie scores	1	1	3	6	11
Lead changes	1	1	3	3	8

LOS ANGELES - Sophomore Mariana Aquino had nine kills and a career-high 11 blocks, as the Bruins tied a season best with 17 blocks as a team, while juniors Rachael Kidder and Tabi Love each added 17 kills in #9 UCLA's four-set win over San Diego on Saturday in the second round of the NCAA Tournament at the John Wooden Center. Set scores were 25-16, 25-15, 22-25, 25-17.

Aquino hit .571 for the match with only one error in 14 attempts, while Kidder and Love each added six blocks. Senior Lainey Gera (23) and junior Bojana Todorovic (13) were each in double figures in digs. Senior Lauren Van Orden produced 47 assists, eight digs, five blocks and three kills and sophomore Kelly Reeves added seven kills and nine digs. The Bruins hit .268 for the match.

The Toreros scored the first point of the match, but the Bruins got the next three on an Aquino kill and back-to-back combo blocks by Aquino and Reeves and then Aquino and Kidder to go up 3-1. UCLA never trailed for the rest of the set. Leading 6-4, the Bruins netted three straight on a kill by freshman Zoë Nightingale and consecutive spikes from Love to go ahead 9-4. With the score 11-6, the Toreros scored four straight to cut their deficit to one at 11-10. San Diego was within one again at 12-11 and 13-12, but could not get back to equal.

UCLA scored four straight and seven of eight to take a 20-13 advantage. Four straight kills by Kidder made it 17-12, and after a San Diego sideout, another Kidder kill, a solo block by Love and a Nightingale spike made it a seven-point difference. Still ahead 22-

16, the Bruins got the final three of the set on a USD attack error and back-to-back kills by Reeves to win it 25-16. Kidder led the Bruins with six kills in the opener, while Aquino, Love and Reeves each had three. Aquino also had three blocks, as the Bruins out-hit the Toreros .333 to .056.

San Diego broke out to early leads of 5-2 and 7-4 in the second set, but UCLA scored 11 straight points and the rout was on. Two kills by Love, with a Van Orden kill in between tied the score at seven. After a USD attack error, Van Orden came through on two straight points with a solo block and a combo roof with Aquino to make it 10-7. Two more combo blocks by Aquino and Love and Aquino and Van Orden, along with three USD attack errors, gave UCLA a 15-7 advantage.

Leading 15-9, the Bruins scored five of six to go up by double digits for the first time at 20-10. Love and Todorovic each had kills during the run, as USD also committed three errors. UCLA went on to win the second 25-15 following Love's team-best fifth kill of the set. Van Orden added three kills and three blocks, Kidder had three kills and Aquino recorded four blocks. Gera added six digs, as the Bruins out-hit the Toreros .258 to .026.

The Bruins scored the first three points of the third set, but the Toreros pecked away at their deficit and took their first lead of the set at 9-8. UCLA responded with three straight and six of seven to go up by four at 14-10. Kills by Reeves, Aquino and Kidder made it 11-9. After a USD sideout, an Aquino kill, a Kidder solo block and

a Torero attack error made it a four-point difference.

UCLA still led by four at 19-15, but San Diego closed out the third with a 10-3 run to force a fourth set. Kidder had five kills to lead the Bruins in the third set, Aquino added four and Love posted three. Gera recorded eight digs, as the Bruins were out-hit .250 to .140.

The Bruins had an early 7-4 lead in the fourth set on two kills from both Kidder and senior Sara Sage, a kill by Love, a Kidder/Nightingale combo block and a USD attack error, but the Toreros scored the next four to take an 8-7 edge. UCLA countered with the next three points on a kill and solo block by Love and a combo roof from Aquino and Love to go ahead 10-8. USD tied the score at 10-all, but a 3-0 UCLA run on a Torero attack error, a Reeves kill and an Aquino/Love combo block made it 13-10.

The Bruins' lead would not dip below two for the rest of the set. With the score 14-12, UCLA got four of five on kills by Aquino, Kidder and Todorovic and a Kidder/Sage combo block to go ahead 18-13. San Diego cut its deficit to three at 19-16, but the Bruins scored six of the last seven points of the match to win the fourth 25-17. Two kills by Love and an Aquino/Love combo block made it 22-16. After a USD sideout, back-to-back kills by Love and one from Reeves on match point finished off the eight-point win. Love posted six kills and four blocks in the fourth, while Kidder added three kills. Meg Norton had six digs, while Gera and Todorovic added five apiece. The Bruins out-hit the Toreros .349 to .094.



#2 KELLY REEVES
OUTSIDE HITTER
6-0 • JUNIOR
SAN DIEGO, CALIF.



#3 TABI LOVE
OUTSIDE HITTER
6-5 • SENIOR
DAUPHIN, MANITOBA



#4 HALEY LAWLESS
OUTSIDE HITTER
6-3 • FRESHMAN
TEMPE, ARIZ.



#5 BECCA STREHLOW
SETTER
6-0 • FRESHMAN
LONG BEACH, CALIF.



#6 KARLY DROLSON
DEFENSIVE SPECIALIST/LIBERO
5-6 • FRESHMAN
DEL MAR, CALIF.



#7 MADDY KLINEMAN
OUTSIDE HITTER
6-3 • FRESHMAN
MANHATTAN BEACH, CALIF.



#9 MEGAN MOENOA
SETTER
5-8 • SOPHOMORE
LONG BEACH, CALIF.



#10 BOJANA TODOROVIC
LIBERO/OUTSIDE HITTER
5-11 • SENIOR
IRVINE, CALIF.



#11 RACHAEL KIDDER
OUTSIDE HITTER
6-3 • SENIOR
MOORPARK, CALIF.



#12 MARIANA AQUINO
MIDDLE BLOCKER
6-3 • JUNIOR
CURITIBA, BRAZIL



#13 ZOE NIGHTINGALE
MIDDLE BLOCKER
6-3 • SOPHOMORE
SACRAMENTO, CALIF.



#14 MEG NORTON
DEFENSIVE SPECIALIST/LIBERO
5-11 • JUNIOR
PACIFIC PALISADES, CALIF.



#15 HANNAH BOLAND
OUTSIDE HITTER/MIDDLE BLOCKER
6-2 • FRESHMAN
SUNNYVALE, CALIF.



#16 RACHEL INOUE
DEFENSIVE SPECIALIST/LIBERO
5-6 • FRESHMAN
KAILUA, HAWAI'I



#17 KARSTA LOWE
OUTSIDE HITTER
6-4 • SOPHOMORE
RANCHO SANTA FE, CALIF.



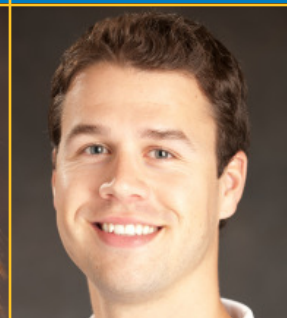
#19 PHELIX FINCHER
DEFENSIVE SPECIALIST/LIBERO
5-5 • FRESHMAN
LOS ANGELES, CALIF.



MICHAEL SEALY
HEAD COACH
THIRD YEAR
UCLA, 1993



JOY MCKENZIE-FUERBRINGER
ASSISTANT COACH
THIRD YEAR
LONG BEACH STATE, 1994



DAN O'DELL
ASSISTANT COACH
SECOND YEAR
PENN STATE, 2006



STEIN METZGER
VOLUNTEER ASSISTANT COACH
FIRST YEAR
UCLA, 1996



MICHAEL SEALY
HEAD COACH
THIRD YEAR
UCLA, 1993
RECORD: 74-22 (.771)

In just his second year as the head coach of the UCLA women's volleyball team, Michael Sealy led the Bruins to the program's fourth NCAA title and seventh national championship in 2011. The Bruins posted a 30-6 record and defeated four-time defending champion Penn State, #1 overall seed Texas, Florida State and Illinois en route to the championship.

Sealy, with a two-year record of 52-15 (.776), was named the AVCA National Coach of the Year in 2011. The Bruins finished second in the Pac-12 Conference with a 17-5 record. Six players were honored on the All-Conference teams, while junior Rachael Kidder, the Most Outstanding Player of the NCAA Tournament, was a first-team All-America and All-Region selection.

UCLA recorded its 13th-straight, 20-win season in '11 and finished fifth in the nation in assists per set (13.71) and eighth in kills per set (14.52). Among

Pac-12 teams, the Bruins ranked first in aces, second in kills and opponent hitting percentage (.160) and third in digs per set (15.95).

In his first campaign, Sealy guided the Bruins to a 22-9 record, a fourth-place finish in the Pacific-10 Conference (11-7) and a second-round appearance in the NCAA Tournament. Three Bruins were named to the All-Pac-10 team in 2010, Dicey McGraw (first team), Lainey Gera (honorable mention) and Kidder (honorable mention), while McGraw also earned AVCA All-Pacific Region honorable mention accolades.

UCLA finished in the top half of the Pac-10 in digs (2nd, 15.41), assists (4th, 13.46), kills (4th, 14.26) and aces (5th, 1.20) per set along with opponent hitting percentage (4th, .187).

UCLA Athletic Director Dan Guerrero announced on Feb. 10, 2010 that Sealy was named head coach of the Bruin women's volleyball program. Sealy returned to his alma mater after spending four seasons (2006-09) as an associate head coach at the University of Hawai'i. He was a three-time All-American and an assistant coach for four years with the UCLA men's volleyball team and was an assistant with the Bruin women's volleyball program in 2005.

"We are excited to welcome back Michael Sealy to lead the women's volleyball program," Guerrero said. "Michael clearly possesses the necessary credentials to allow UCLA to compete at the highest level. He is well-respected in the volleyball community and has an enthusiastic and passionate approach towards the game. Furthermore, as a former Bruin player and coach, he understands the tradition of excellence that has defined the volleyball programs at UCLA and I am confident that he will continue that legacy of success with ambition and integrity."

"I am very excited and inspired to be back at UCLA," said Sealy. "I feel very fortunate and humbled to take over a program with such a storied history. I would like to thank Dan Guerrero and (Senior Associate Athletic Director/Senior Women's Administrator) Petrina Long for giving me this opportunity and for supporting my vision for the future of the program."

Sealy helped Hawai'i to a berth in the National Semifinals in 2009. The Rainbow Wahine recorded their second-straight, 30-win season last year, going 32-3 overall. They also posted a 16-0 mark in conference play to earn their 14th-straight Western Athletic Conference title and went on to claim their 10th-consecutive WAC Tournament championship. Sealy's record during his tenure at Hawai'i was 119-19 (.862 winning percentage).

Prior to his stint at Hawai'i, Sealy coached for four seasons at UCLA, where he was an assistant on the men's side from 2003-2006 and an assistant for the women's volleyball team in 2005. In his lone season on the women's side, the Bruins posted a 20-11 record and advanced to the Regional Semifinals. With the UCLA men, Sealy was 91-38 (.705) during his four campaigns, helping the Bruins to an NCAA Championship in 2006 and an NCAA Runner-Up finish in 2005. Sealy was also a volunteer assistant with the Cal State Northridge men's volleyball team in 2000 before working in the same capacity with the UCLA men in 2001.

One of the top setters in UCLA history, Sealy was a four-year letterwinner with the Bruins from 1990-93 and ranks fourth in Bruin annals in assists (4,749). In his senior season, Sealy and the Bruins won the program's 14th National Championship, going 24-3. The team captain was named the co-Most Outstanding Player of the 1993 NCAA Tournament and also earned ASICS/Volleyball Monthly Player of the Year and AVCA All-American first-team honors. In addition, Sealy was named an All-American in 1991 (first-team) and 1992 (third-team), as well as All-Conference three times. The Bruins won three conference titles during Sealy's playing days, going 80-24 (.769) during his four years.

Following his playing career in Westwood, Sealy went on to play professionally in Switzerland, Belgium, Holland and Puerto Rico. He also played with the U.S. National Team in 1994 and 1997.

Sealy graduated from UCLA in 1993 with a degree in physiological science.





#2 KELLY REEVES
OUTSIDE HITTER
6-0 • JUNIOR
SAN DIEGO, CALIF.

2012

Reeves has appeared in all 29 matches and is second on the team with 2.50 digs per set and 19 service aces, posting multiple aces in a match four times ... also has 1.42 kills per set ... has 12 double-figure digs matches this season and 44 for her career ... recorded a season-best 18 digs against USC on Nov. 23 ... notched 13 digs and seven kills at Oregon on Nov. 20 ... had five kills and nine digs against Stanford on Nov. 16 ... recorded eight kills and no hitting errors in 10 attempts (.800) with seven digs versus California on Nov. 15 ... had 11 digs and nine kills at Utah on Nov. 10 ... tied a career high with five blocks at Arizona State on Nov. 3, adding eight digs, five kills and six assists ... posted seven digs, seven kills and an ace at Arizona (Nov. 2) ... had seven kills and no errors in 15 attempts (.467) with 15 digs against Washington on Oct. 28 ... posted 10 digs, four kills and three blocks versus Washington State on Oct. 26 ... posted six digs and four kills against both Colorado (Oct. 19) and Utah (Oct. 17) ... had seven kills, six digs and two aces on Oct. 14 at California ... tallied her 10th-career double-double with a season-best 14 kills (14th-career, double-figure kills

match) and 15 digs at Stanford on Oct. 12 ... had six kills and six digs against Arizona (Oct. 7) and six digs versus Arizona State (Oct. 5) ... recorded 13 digs at Washington on Sept. 26 ... had eight kills, six digs and two aces against Oregon State (Sept. 21) ... totaled 11 digs at USC on Sept. 19 ... had 16 digs at Colorado State on Sept. 15 ... notched eight digs against Pepperdine (Sept. 12) ... posted 13 digs at Hawai'i (Sept. 9) ... tied a career high with three aces against Idaho on Sept. 7 ... recorded 11 digs and two aces at UC Santa Barbara on Sept. 1 ... had a double-double with 10 kills and 11 digs against Notre Dame on Aug. 24 ... had five kills and eight digs at Nebraska on Aug. 25 ... named to the Pac-12 All-Academic honorable mention team.

2011

Played in 32 matches (113 sets), starting 31, and was second on the team with 2.87 digs per set and third with 2.10 kills and 2.51 points per set ... had 20 double-figure digs contests and tallied at least eight in 16 of her last 17 matches of the year ... named to the All-Pac-12 First Team ... had double figures in digs in each of the last four matches of the season, including 16 in the National Championship match against Illinois (Dec. 17) and 10 in the National Semifinal versus Florida State (Dec. 15) ... added seven kills in each of those contests and a career-best three aces against the Seminoles ... was named to the Lexington All-Regional Team ... posted her fourth double-double of the year with 11 kills and 11 digs against Penn State on Dec. 9, hitting .474 with two errors in 19 attempts to go with an ace and three blocks ... it was her sixth double-figure kills contest of the season ... had nine kills and 14 digs versus Texas on Dec. 10 ... notched four kills, five digs and three blocks against Maryland Eastern Shore on Dec. 2 and seven kills and nine digs versus San Diego on Dec. 3 ... posted 12 digs, five kills and three blocks against USC on Nov. 25 ... had 10 digs, eight kills and two aces versus Arizona State (Nov. 20) ... tallied 10 digs and nine kills against Arizona on Nov. 18 ... had 10 digs and seven kills at Oregon State on Nov. 12 ... produced eight kills and eight digs on Nov. 11 at Oregon ... recorded 18 digs against Washington on Nov. 4, which was one shy of tying a career high ... added eight kills, nine digs and four blocks against Washington State on Nov. 6 and was named Pac-12 Defensive Player of the Week for the second time on Nov. 7 ... had 13 digs and five kills on Oct. 29 at Stanford and eight digs on Oct. 28 at California ... produced double figures in digs on Oct. 21 against Colorado with 12 and five kills and on Oct. 22 versus Utah with 11 and seven kills on only one error in 15 attempts (.400) ... recorded 10 kills, six digs, four blocks and an ace against Oregon on Oct. 15 and 10 digs and an ace versus Oregon State on Oct. 14 ... was named Pac-12 Defensive Player of the Week on Sept. 26 and AVCA National Player of the Week on Sept. 27 after recording a pair of double-doubles against Stanford (Sept. 23) and California (Sept. 24) ... tied a career high with 17 kills and set a new personal best with 19 digs against Stanford ... added 14 digs and a team-best 14 kills with only two errors in 27 attempts for a .444 hitting percentage versus Cal ... recorded eight kills at Washington State (Sept. 16) with only one error in 11 attempts for a .636 hitting percentage ... fell just short of a double-double with nine kills and nine digs at Washington (Sept. 17) with two errors in 16 swings (.438) ... posted 13 digs at Hawai'i on Sept. 4 ... had 10 digs and eight kills at Pepperdine (Sept. 7), 11 digs and six kills at USC (Sept. 9) and 11 digs and eight kills against Cal State Northridge (Sept. 12) ... recorded her first double-double of the season with 10 kills and 12 digs to go with four blocks on Sept. 1 against Long Beach State ... had eight kills and eight digs versus Ohio State on Sept. 2 ... produced a team-high 11 kills and five blocks (career high) against Loyola Marymount (Aug. 27), hitting .409 with only two errors in 22 swings ... named to the Pac-12 All-Academic honorable mention team.

CAREER STATISTICS

YEAR	SP	MP-MS	K	K/SET	E	TA	PCT	A	A/SET	SA	SA/SET	SE	RE	DIG	DIG/SET	BS	BA	TOT	BLK/S	BE	BHE	PTS	P/SET
2010	108	31-20	151	1.40	61	404	.223	16	0.15	18	0.17	22	18	225	2.08	3	23	26	0.24	4	0	183.5	1.69
2011	113	32-31	237	2.10	95	612	.232	36	0.32	15	0.13	22	25	324	2.87	4	56	60	0.53	5	0	284.0	2.51
2012	102	29-25	145	1.42	44	347	.291	36	0.35	19	0.19	24	17	255	2.50	5	29	34	0.33	1	1	183.5	1.79
TOTALS	323	92-76	533	1.65	200	1363	.244	88	0.27	52	0.16	68	60	804	2.49	12	108	120	0.37	10	1	651.0	2.02

SEASON HIGHS	CATEGORY	CAREER HIGHS
14, at Stanford (10/12)	Kills	17, at Ariz. (10/15/10) & v. Stan. (9/23/11)
29, at Stanford (10/12)	Total Attacks	40, vs. Stanford (9/23/11)
.345 (14-4-29), at Stanford (10/12)	Hit % (Min. 10K)	.484 (17-2-31), at Arizona (10/15/10)
3, vs. Idaho (9/7)	Aces	3, vs. Fla. St. (12/15/11) & vs. UI (9/7/12)
18, vs. USC (11/23)	Digs	19, vs. Stanford (9/23/11)
1, 5 Times (last at Arizona State, 11/3)	Block Solos	2, vs. Stanford (10/9/10)
4, at Arizona State (11/3)	Blk Assists	4, 5 Times (last at Arizona St., 11/3/12)
5, at Arizona State (11/3)	TB	5 (1-4), at LMU (8/27/11) & at AS (11/3/12)
16.5, at Stanford (10/12)	Points	19.5, at Arizona (10/15/10)

SUMMER 2011

Was the team captain for the U.S. Women's Junior National Team, which finished fourth at the FIVB Women's Junior World Championship in Peru (July 20-31) ... concluded the tournament ranked seventh among all players in points scored with 115, which was second on Team USA ... posted 97 kills, nine blocks and nine service aces ... led the U.S. and was tied for 15th in the tournament in aces ... was second on the squad in kills (sixth in the tournament) and digs with 69 (18th in the tournament) ... led or was tied for the team lead in kills in a match in three of eight contests ... had double figures in kills six times, double figures in digs four times and three double-doubles.

2010

Was named to the Pacific-10 Conference All-Freshman Honorable Mention Team after placing third on the squad with 2.08 digs per set and fourth with 0.17 service aces per set ... added 1.40 kills per set, a .223 hitting percentage and 0.24 blocks per set ... played in all 31 matches, making 20 starts and appearing in 108 sets ... had four double-doubles ... notched season bests in kills (17), points (19.5) and hitting percentage (.484) with only two errors in 31 attempts at Arizona on Oct. 15, adding 10 digs and two service aces ... produced 12 kills, 13 digs and two aces against Saint Mary's (Sept. 3), 11 kills and 11 digs at Cal State Northridge (Sept. 14) and 11 kills and 12 digs at UC Irvine (Sept. 18) ... totaled six double-figure kills contests ... had 12 kills at Hawai'i on Aug. 29 and 11 kills with three blocks at Stanford on Nov. 5 ... recorded 12 double-figure digs matches ... had season highs in digs with 15 and blocks with four against Pepperdine on Sept. 8 ... registered 13 digs against Arizona (Nov. 13), USC (Nov. 26) and in the NCAA First Round match versus American (Dec. 3), 12 digs at USC (Sept. 24) and 10 digs against Washington (Oct. 2), Washington State (Oct. 31) and California (Nov. 6) ... tallied a pair of aces in four matches ... had at least five kills and hit .400 or better on four occasions ... posted two block solos versus Stanford on Oct. 9.

CATHEDRAL CATHOLIC HIGH SCHOOL

Reeves was a two-sport athlete at Cathedral Catholic High School in San Diego, Calif. ... played four years of varsity volleyball and two seasons of varsity basketball ... named All-Western League, All-CIF and All-San Diego County first team each year ... was a two-time Western League and CIF Player of the Year as a sophomore and senior ... as a senior was named an All-American by Under Armour, Max Preps, ESPN and PrepVolleyball.com, San Diego and California Division III Player of the Year and MVP of the D-3 State Tournament ... holds the school record for kills in a season (584) and San Diego County record for career kills (1,548) and digs (1,658) ... helped the Dons to four league and CIF titles and a pair of State championships in '08 and '09 ... coached by Kelly Drobeck ... was also a two-time, all-league basketball player and All-CIF in '08 ... was a member of the 2010 Junior National Team that won gold at the NORCECA Women's Junior Continental Championships in Tijuana, Mexico in July ... also won gold with the U.S. Youth National Team at the '08 NORCECA Girls' Youth Championships and silver with the USA Select White Team at the '07 USAV High Performance Championships ... was a member of the 2006 USA Select Blue Team that competed at the USAV High Performance, receiving Best Attacker honors ... played club with Encinitas Wave, which were 2008 Junior Olympic Champions ... she was named MVP of that title-winning team and also earned All-Tournament team honors in 2009 (bronze medal) and 2010.

PERSONAL

Born Kelly Beauprey Reeves on April 8, 1992 at the UCLA Hospital ... parents are Jeanne and Mike Reeves ... her mother, who was also her club coach for six years, was a four-year letterwinner (1979-82) at UCLA and ranks 14th on the Bruins' all-time kills list ... she was an All-American in 1982 and an assistant on the '90 and '91 National Championship squads ... has two brothers, Connor and Jake ... her aunt, grandfather and cousin also attended UCLA ... things she likes the most about volleyball are making the spectacular hustle plays, the long rallies and hitting the over passes straight down ... hobbies include fishing with her dad, horseback riding and playing beach volleyball ... biggest athletic thrill was playing on the 2010 U.S. Junior National Team because it challenged her both physically and mentally ... favorites include the movie "The Hangover" and the San Diego Chargers ... majoring in history.



#3 TABI LOVE
OUTSIDE HITTER
6-5 • SENIOR
DAUPHIN, MANITOBA

2012

Love, an All-Pac-12 First Team honoree, has played in all 29 matches and has double figures in kills in 27 of them to give her 42 as a Bruin (78 career) ... leads the team with 4.54 kills and 4.94 points per set and holds a .303 hitting percentage ... had 16 kills and three blocks against USC on Nov. 23 ... tallied 16 kills at Oregon on Nov. 20 ... had 10 kills, two aces and three blocks against Stanford (Nov. 16) ... posted her second double-double as a Bruin and her ninth match this season with at least 20 kills after going for 21 kills and 11 digs versus California ... hit .606 with just one error in 33 attempts against the Bears ... was just shy of a double-double with 16 kills and nine digs at Utah on Nov. 9 ... hit a UCLA career-best .640 at Colorado (Nov. 9) with 17 kills and only one error in 25 attempts ... posted her first double-double as a Bruin with 24 kills and 11 digs to go with two aces and three blocks at Arizona State (Nov. 3) ... had 11 kills and six digs at Arizona on Nov. 2 ... was named Pac-12 Offensive Player of the Week on Oct. 29 after producing 25 kills against Washington (Oct. 28) and 24 versus Washington State (Oct. 26) ... added six digs and two blocks against the Huskies and a .412 hitting

percentage with five digs versus the Cougars ... recorded 14 kills and five digs against Colorado (Oct. 19) ... tallied 18 kills, five digs and an ace versus Utah on Oct. 17 ... had 16 kills, seven digs and her first service ace as a Bruin on Oct. 14 at California ... posted 25 kills to go with four blocks at Stanford (Oct. 12) ... produced 13 kills and no hitting errors in 22 attempts (.591 hitting percentage) against Arizona on Oct. 7 ... had 15 kills, four blocks and a .393 percentage versus Arizona State on Oct. 5 ... had 10 kills and no errors in 19 attempts for a .526 hitting percentage at Washington State on Sept. 28 ... recorded 25 kills at Washington on Sept. 26 ... had 12 kills against Oregon State (Sept. 21) ... posted 14 kills at USC on Sept. 19 ... registered 24 kills at Colorado State (Sept. 15) to go with a .310 hitting percentage and four block solos ... had 16 kills and only two errors in 26 attempts for a .538 percentage against Pepperdine on Sept. 12 ... was named the Most Outstanding Player of the Verizon Volleyball Challenge after setting a career high in kills with 26 and points with 29.5 at Hawai'i (Sept. 9) ... hit .346 and added five blocks ... posted five kills against San Diego State (Sept. 8) ... had a .625 hitting percentage with 11 kills and only one error in 16 attempts versus Idaho on Sept. 7 ... recorded 12 kills at UC Santa Barbara (Sept. 1) and nine kills against Northeastern (Aug. 31) ... had 20 kills at Nebraska on Aug. 25, hitting .314 with four blocks (three solo) ... added 12 kills in the opener versus Notre Dame (Aug. 24) ... named to the Pac-12 All-Academic honorable mention team.

2011

Played in 35 matches (117 sets), starting 16, and was second on the team with 2.79 kills per set and 3.13 points per set, and tied for first with 21 block solos ... named to the All-Pac-12 honorable mention team ... had 15 double-figure kills matches, including each of the last three contests of the year ... recorded 14 kills and three blocks in the National Championship match against Illinois (Dec. 17) and 12 kills in the National Semifinal versus Florida State (Dec. 15) ... tied a season high with 18 kills against Texas on Dec. 10, adding seven kills versus Penn State on Dec. 9 ... posted 17 kills against San Diego on Dec. 3, hitting .351 ... had a season-high (equaled career best) six blocks on two solos and four assists ... added eight kills and only one error in 13 swings (.538) on Dec. 2 against Maryland Eastern Shore ... posted seven kills on Nov. 18 against Arizona and eight kills and three blocks on Nov. 20 versus Arizona State ... recorded 13 kills at Oregon State on Nov. 12 and nine at Oregon on Nov. 11 ... tallied 12 kills on Nov. 4 against Washington ... posted 14 kills on Oct. 28 at California and eight on Oct. 29 at Stanford ... posted seven kills on Oct. 22 versus Utah ... notched three straight with at least 10 kills from Oct. 8-15 ... posted a .404 hitting percentage against the Oregon schools (Oct. 14-15), recording a team-high 13 kills with two errors in 26 attempts (.423) against Oregon State on Oct. 14 and 16 kills with four errors in 31 swings (.387) versus Oregon on Oct. 15 with four blocks ... had 12 kills at Arizona on Oct. 8 and added nine at Arizona State on Oct. 7 ... came off the bench to

SEASON HIGHS

SEASON HIGHS	CATEGORY	UCLA CAREER HIGHS
26, at Hawai'i (9/9)	Kills	26, at Hawai'i (9/9/12)
73, at Stanford (10/12)	Total Attacks	73, at Stanford (10/12/12)
.640 (17-1-25), at Colorado (11/9)	Hit % (Min. 10K)	.640 (17-1-25), at Colorado (11/9/12)
2, at ASU (11/3) and vs. Stanford (11/16)	Aces	2, at ASU (11/3/12) & vs. Stan. (11/16/12)
11, at ASU (11/3) and vs. California (11/15)	Digs	11, at ASU (11/3/12) & vs. Cal (11/15/12)
4, at Colorado State (9/15)	BS	4, at LMU (8/27/11) & at CSU (9/15/12)
4, at Stanford (10/12)	BA	4, 3 Times (last at Stanford, 10/12/12)
5, at Hawai'i (9/9)	Total Blocks	6 (2-4), vs. San Diego (12/3/11)
29.5, at Hawai'i (9/9)	Points	29.5, at Hawai'i (9/9/12)

post eight kills at Utah (Sept. 30) and seven kills with only one error in 17 attempts for a .353 hitting percentage at Colorado (Oct. 2) ... had 11 kills and five blocks against California on Sept. 24 and 10 kills versus Stanford on Sept. 23 ... posted 14 kills at Pepperdine on Sept. 7 and eight at Washington on Sept. 17 ... led the Bruins with a season-best 18 kills at Hawai'i on Sept. 4 ... added 11 kills against Long Beach State on Sept. 1 ... had eight kills and only one error in 21 attacks (.333) with four block solos at Loyola Marymount on Aug. 27.

MINNESOTA - 2010

Led the Golden Gophers with 3.47 kills per set, was tied for first with 19 aces and was second with 3.93 points per set, adding 1.42 digs and 0.47 blocks per set ... recorded 23 double-figure kills matches, six double-figure digs contests and four double-doubles ... produced a season-best 24 kills against Illinois on Oct. 22 ... had three straight double-doubles at the Diet Coke Classic (Sept. 3-4) with 17 kills and 11 digs against Baylor, 23 kills and 12 digs versus Northern Iowa and 17 kills and 10 digs against Dayton ... added another double-double with 20 kills and 10 digs at Michigan on Sept. 25 ... hit a season-best .464 with 16 kills and three errors in 28 swings on Oct. 3 against Indiana ... was named Big Ten Player of the Week on Aug. 30.

MINNESOTA - 2009

Was named to the Big Ten All-Freshman Team after finishing third on the squad with 2.63 kills and 2.94 points per set, adding 0.50 blocks and 0.46 digs per set ... played in all 37 matches ... posted 13 double-figure kills contests, including four in the final five matches ... had a season-best 22 kills in the Regional Semifinal match against Colorado State on Dec. 11 ... added 21 kills a day later in the Regional Final versus Florida State, going on to earn Regional Most Valuable Player honors ... recorded 19 kills in a first-round matchup with Louisville (Dec. 4) and 11 kills in a second-round win over Tennessee (Dec. 5) ... added 19 kills versus Michigan (Oct. 24) and 18 against Michigan State (Oct. 23) ... posted six blocks versus both Iowa State on Sept. 5 and Northwestern on Oct. 17 ... hit a season-best .500 with 15 kills and only two errors in 26 swings at Iowa on Nov. 13 ... was named Big Ten Player of the Week on Oct. 26 and conference Freshman of the Week on Sept. 7 and Oct. 26.

DAUPHIN REGIONAL SECONDARY

Love was a four-sport star at Dauphin Regional Secondary School in Dauphin, Manitoba ... led the Clippers to four straight Regional Championships, earning Most Valuable Player honors all four years ... was also a four-year letterwinner in track and field and a three-year letterwinner in both soccer and basketball ... played club with Selkirk Royals ... was named Most Valuable Player of a pair of Club National and Provincial Championship teams in 2007 and '08 ... played for the Canadian Junior National Team in 2007 and '08.

PERSONAL

Born Tabitha Ashly Love on Sept. 11, 1991 in Brandon, Manitoba ... parents are Tanya and Jeremy Love ... is the oldest of four children, with sisters KC and Sami and brother Jay ... number one reason she plays volleyball is to push herself and to create lasting memories to remember long after she's done playing ... favorites include the television show "Seinfeld", singer Trey Songz, watermelon, the Chicago Bulls and their star player Derrick Rose ... biggest athletic thrill of her career was the 2009 NCAA Regional Final victory over Florida State ... favorite academic class is theater ... majoring in english.

CAREER STATISTICS (2009-10 TOTALS AT MINNESOTA)

YEAR	SP	MP-MS	K	K/SET	E	TA	PCT	A	A/SET	SA	SA/SET	SE	RE	DIG	DIG/SET	BS	BA	TOT	BLK/S	BE	BHE	PTS	P/SET
2009	126	37	332	2.63	133	866	.230	7	0.06	1	0.01	-	3	58	0.46	12	51	63	0.50	-	-	370.5	2.94
2010	121	34	420	3.47	155	1181	.224	5	0.04	19	0.16	28	1	172	1.42	15	42	57	0.47	5	2	475.0	3.93
2011	117	35-16	327	2.79	138	940	.201	1	0.01	0	0.00	1	0	42	0.36	21	37	58	0.50	4	0	366.5	3.13
2012	105	29-18	477	4.54	130	1145	.303	9	0.09	6	0.06	10	3	89	0.85	16	40	56	0.53	4	1	519.0	4.94
TOTALS	469	135	1556	3.32	556	4132	.242	22	0.05	26	0.06	39	7	361	0.77	64	170	234	0.50	13	3	1731.0	3.69
AT UCLA	222	64-34	804	3.62	268	2085	.257	10	0.05	6	0.03	11	3	131	0.59	37	77	114	0.51	8	1	885.5	3.99



#5 BECCA STREHLOW
SETTER
6-0 • FRESHMAN
LONG BEACH, CALIF.

2012

Strehlow, who was named to the Pac-12 All-Freshman Honorable Mention team, has started 17 of the 25 matches she has played in and is averaging a team-best 10.40 assists per set and 2.05 digs per set, which is third on the team ... had 11 assists and three digs in a set and a half against USC on Nov. 23 ... posted 16 assists in two sets at Oregon on Nov. 20 ... had her third double-double of the year with 45 assists and 10 digs against Stanford on Nov. 16 ... notched 49 assists and five digs against California on Nov. 15 ... tied season highs with seven kills and 52 assists at Utah on Nov. 10, setting a career best with seven blocks and adding seven digs and one ace ... had 44 assists, seven digs, three kills and three blocks at Colorado (Nov. 9) ... recorded seven kills, seven digs, three blocks and 47 assists at Arizona State on Nov. 3 ... had 23 assists, four digs and three kills in two sets against Washington on Oct. 28 ... had 41 assists and 11 digs versus Utah on Oct. 17 for her second double-double ... added three kills and a career-high three aces against the Utes ... tallied 27 assists and eight digs in two sets at Washington (Sept. 26) ... had 37 assists, six digs, four kills

and an ace against Oregon State on Sept. 21 ... posted a season-best 52 assists to go with seven digs and four kills at USC (Sept. 19) ... recorded 37 assists, four kills, seven digs and her first-career ace against Pepperdine on Sept. 12 ... had 37 assists, eight digs and two blocks against Idaho on Sept. 7 ... notched 22 assists, four digs, two blocks and two kills against Northeastern on Aug. 31 ... posted her first-career double-double with 46 assists and 23 digs on Aug. 25 at Nebraska ... added five kills and no errors in 10 attempts.

LONG BEACH WILSON CLASSICAL HIGH SCHOOL

Strehlow played setter, opposite and outside for four years on the varsity squad at Long Beach Wilson Classical High School ... recorded 315 kills (5.0 per set), 163 digs (2.8 per set), 42 blocks and a .388 hitting percentage in 2011 ... All-CIF Southern Section Division I-AA First Team as a junior and senior ... Long Beach Press Telegram Dream Team Player of the Year, MaxPreps California All-State First Team and Moore League POY in 2011 ... earned All-League First Team accolades in each of her final three seasons ... helped the Bruins to Moore League titles three times ('08-'09, '11) ... team captain and

CAREER STATISTICS

YEAR	SP	MP-MS	K	K/SET	E	TA	PCT	A	A/SET	SA	SA/SET	SE	RE	DIG	DIG/SET	BS	BA	TOT	BLK/S	BE	BHE	PTS	P/SET
2012	63	25-17	53	0.84	12	87	.471	655	10.40	6	0.10	7	0	129	2.05	2	27	29	0.46	8	5	74.5	1.17



#6 KARLY DROLSON
DEFENSIVE SPECIALIST/LIBERO
5-6 • FRESHMAN
DEL MAR, CALIF.

2012

Drolson has played in 18 matches, averaging 1.53 digs per set ... had one digs in two sets against USC on Nov. 23 ... started at libero on Nov. 20 at Oregon and had 12 digs and her first career ace ... had four digs at Utah on Nov. 10 ... notched two digs in two sets at Washington on Sept. 26 ... had two digs in one set against Oregon State on Sept. 21 ... posted her first-career, double-figure digs match with 13 at UC Santa Barbara on Sept. 1 ... had six digs against Northeastern on Aug. 31 and seven digs versus Notre Dame on Aug. 24.

TORREY PINES HIGH SCHOOL

Drolson was a two-sport athlete at Torrey Pines High School in San Diego, Calif. ... played on the volleyball team for three years and the gymnastics squad for one season ... named MaxPreps California All-State Division I First Team, Palomar League Player of the Year and All-San Diego, All-North County and All-Palomar First Team as a senior ... helped the Falcons to a league title, a San Diego Section Championship and a State Tournament berth in 2011 ...

CAREER STATISTICS

YEAR	SP	MP-MS	K	K/SET	E	TA	PCT	A	A/SET	SA	SA/SET	SE	RE	DIG	DIG/SET	BS	BA	TOT	BLK/S	BE	BHE	PTS	P/SET
2012	32	18-1	0	0.00	0	1	.000	7	0.22	1	0.03	6	6	49	1.53	0	0	0	0.00	0	0	1.0	0.03

SEASON/CAREER HIGHS

Kills	7, at Arizona State (11/3/12) and at Utah (11/10/12)
Total Attacks	11, at Utah (11/10/12)
Assists	52, at USC (9/19/12) and at Utah (11/10/12)
Service Aces	3, vs. Utah (10/17/12)
Digs	23, at Nebraska (8/25/12)
Block Solos	1, vs. Northeastern (8/31/12) and at Utah (11/10/12)
Block Assists	6, at Utah (11/10/12)
Total Blocks	7 (1-6), at Utah (11/10/12)
Points	12.0, at Utah (11/10/12)

MVP as a junior and senior ... coached by Susan Pescar and Carlos Briceno ... recipient of the Wilson Scholar Athlete Award of Excellence ... rated as the #8 Senior Ace by Prep Volleyball and named to the Volleyball Magazine 2012 Feb 50 ... was also a Prep Volleyball Top 50 Junior recruit and a Freshman and Sophomore of the Year finalist ... played club with the nationally top-ranked Sports Shack 18 Asics and helped them to back-to-back USA Volleyball Junior Nationals 18 Open Championships as a team captain (2011-12) ... named to the All-Tournament Team three straight years (2010-12) to become the first player to accomplish the feat in 18 Open ... named Southern California Volleyball POY by VolleyballNow.net ... is also a member of the USA Beach Volleyball Youth National Team ... finished ninth at the FIVB/Swatch Youth (U19) World Championships in Portugal (2010) and fifth at the FIVB/Swatch Junior (U21) World Championships in Canada (2012) ... earned an SCVA High Performance Select Gold medal and a USA High Performance Select Bronze medal.

PERSONAL

Born Rebecca Michelle Strehlow on July 10, 1994 in Long Beach, Calif. ... parents are Michelle and Eric ... stepfather is Richard Williamson ... has one older sister, Christina ... chose to attend UCLA because it was the whole package, with great academics, a beautiful campus located close to her family and an excellent volleyball program ... things she likes the most about volleyball are making a great block and coming from behind to win an intense match ... hobbies include playing beach volleyball and playing rummikub with her family ... lists her biggest athletic thrill as winning back-to-back National Championships in 18 Open ... favorites include the movie "The Dark Knight Rises", singer Luke Bryan, Mexican food and sushi and the three-time, Olympic Gold-Medal winning tandem of Misty May-Treanor and Kerri Walsh Jennings ... patterns her play after former UCLA All-American setter Nellie Spicer ... undecided on a major.

SEASON/CAREER HIGHS

Service Aces	1, at Oregon (11/20/12)
Digs	13, at UC Santa Barbara (9/1/12)
Points	1.0, at Oregon (11/20/12)

coached in volleyball by Brennan Dean ... earned Union Tribune All-Academic Team and TPHS Scholar Athlete honors ... played club with Wave Volleyball and helped them to a title at the 2011 Northeast J.O. Qualifier, serving as a team captain.

PERSONAL

Born Karly Caye Drolson on March 26, 1994 in La Jolla, Calif. ... parents are Candace and Paul Drolson ... has one older sister, Kaitlin, who played golf at Pepperdine for four years and has played in the 2009 and '10 U.S. Women's Open and U.S. Women's Amateur ... chose to attend UCLA because it was her #1 choice and because it's the greatest school on Earth ... thing she likes the most about volleyball is the competitiveness ... favorites include watching ESPN, the movie "Finding Nemo", singer Taylor Swift and the San Diego Chargers ... biggest athletic thrills of her career have been becoming a member of the UCLA women's volleyball team and winning a Gold Medal with USA High Performance ... hobbies include surfing and playing beach volleyball ... athlete she admires is Misty May-Treanor for her defensive play and passion for the sport ... undecided on a major.



#7 MADDY KLINEMAN
OUTSIDE HITTER
6-3 • FRESHMAN
MANHATTAN BEACH, CALIF.

2012

Klineman, who has played in six matches and eight sets, made her collegiate debut against Idaho on Sept. 7 and had five kills and one error in 12 attempts (.333) with two digs and one block in two sets ... played in one set against Colorado State (Sept. 15) and Arizona (Oct. 7) and two sets at USC on Sept. 19 ... had one block assist against Oregon State (Sept. 21) ... posted one kill at Colorado on Nov. 9.

MIRA COSTA HIGH SCHOOL

Klineman played three years on the Mira Costa High School (Manhattan Beach, Calif.) varsity volleyball team at outside and opposite hitter ... as a senior in 2011, was named All-Bay League and All-Area First Team, also serving as the team captain ... produced 257 kills, 33 aces, 168 digs and 33 blocks ... helped the Mustangs to three consecutive Bay League Championships ... coached by Lisa Arce ... ranked as the No. 91 Senior Ace by Prep Volleyball ... most recently played club with Mizuno Long Beach, as her team placed second at the Far Westerns Qualifier in 2011 and '12 ... was also third in the L.A. Qualifier in '10 and '11 ... participated in Junior Olympics from 2006-12 ... played

SEASON/CAREER HIGHS

Kills	5, vs. Idaho (9/7/12)
Total Attacks	12, vs. Idaho (9/7/12)
Digs	2, vs. Idaho (9/7/12)
Block Assists	1, vs. Idaho (9/7/12) and vs. Oregon State (9/21/12)
Total Blocks	1.0 (0-1), vs. Idaho (9/7/12) and vs. Oregon State (9/21/12)
Points	5.5, vs. Idaho (9/7/12)

with the USA High Performance Youth National A1 Team in 2008.

PERSONAL

Born Madeleine Anne Klineman on July 13, 1994 in Torrance, Calif. ... parents are Kathleen and Michael Klineman ... is the youngest of three siblings ... brother is Max and sister is Alix, who was a four-time All-American at Stanford ... chose to attend UCLA because of the combination of amazing academics and athletics, great coaching staff and team, and location ... favorite academic class is French ... things she likes the most about volleyball are the team aspect, the dependence of one position on another, the bonds and relationships built, and celebrating together after a big point or win ... hobbies include body surfing, shopping, working out and traveling ... lists her biggest athletic thrill as sweeping Redondo in front of a packed home gym during her senior year ... favorites include the "Harry Potter" series and "Bridesmaids", swimmer Michael Phelps and actress Blake Lively ... undecided on a major.

CAREER STATISTICS

YEAR	SP	MP-MS	K	K/SET	E	TA	PCT	A	A/SET	SA	SA/SET	SE	RE	DIG	DIG/SET	BS	BA	TOT	BLK/S	BE	BHE	PTS	P/SET
2012	8	6-0	6	0.75	3	21	.143	0	0.00	0	0.00	1	0	2	0.25	0	2	2	0.25	0	0	7.0	0.88



#9 MEGAN MOENOA
SETTER
5-8 • SOPHOMORE
LONG BEACH, CALIF.

2012

Moenoa has started 12 of the 20 matches she has played in and is averaging 10.19 assists, 2.02 digs and 0.75 blocks per set ... had 32 assists, six digs, four blocks, three kills and an ace in three sets against USC on Nov. 23 ... posted 19 assists, five digs and three blocks at Oregon on Nov. 20 ... had 30 assists and seven digs at Arizona on Nov. 2 ... had 36 assists and five digs against Washington on Oct. 28 ... recorded her second-career double-double with 34 assists and 12 digs versus Washington State (Oct. 26) ... posted 22 assists, three digs, three blocks, three kills and an ace against Colorado on Oct. 19 ... had 24 assists and seven digs at California (Oct. 14) ... posted a career-high 66 assists and 16 digs for her first-ever double-double at Stanford on Oct. 12, adding two aces ... had a career-best three aces to go with 28 assists, five digs and three blocks against Arizona on Oct. 7 ... posted 33 assists, five digs and three kills versus Arizona State (Oct. 5) ... recorded 41 assists, three kills and five digs at Washington State on Sept. 28 ... had 40 assists, six digs and an ace in three sets at Washington (Sept. 26) ... posted 45 assists to go with six digs and four blocks at Colorado

State on Sept. 15 ... had 44 assists and a personal-high six blocks at Hawai'i on Sept. 9, adding nine digs and an ace ... notched 26 assists, an ace and four digs against San Diego State on Sept. 8 ... had 31 assists and nine digs at UC Santa Barbara on Sept. 1 ... started the season opener against Notre Dame on Aug. 24 and had 35 assists to go with six digs, four blocks, three kills and an ace ... named to the Pac-12 All-Academic honorable mention team.

2011

Played in 19 matches (34 sets), making four starts ... recorded 182 assists (5.35 per set) and 26 digs (0.76 per set) ... had 20 assists and a season-best seven digs on Nov. 25 against USC ... posted 24 assists and three digs versus Arizona State on Nov. 20 ... had eight assists and one dig in one set at Oregon on Nov. 11 ... posted 15 assists, three digs and two kills on Oct. 21 against Colorado and five assists on Oct. 22 versus Utah ... had 12 assists and a block assist on Oct. 14 against Oregon State ... posted six assists and a kill versus California on Sept. 24 ... recorded 13 assists in two sets at Washington on Sept. 17 and two kills and five assists in one set against Cal State Northridge on Sept.

CAREER STATISTICS

YEAR	SP	MP-MS	K	K/SET	E	TA	PCT	A	A/SET	SA	SA/SET	SE	RE	DIG	DIG/SET	BS	BA	TOT	BLK/S	BE	BHE	PTS	P/SET
2011	34	19-4	10	0.29	1	25	.360	182	5.35	0	0.00	8	0	26	0.76	1	11	12	0.35	0	2	16.5	0.47
2012	59	20-12	29	0.49	10	67	.284	601	10.19	11	0.19	15	0	119	2.02	2	42	44	0.75	11	2	63.0	1.07
TOTALS	93	39-16	39	0.42	11	92	.304	783	8.42	11	0.12	23	0	145	1.56	3	53	56	0.60	11	4	79.5	0.85

SEASON HIGHS

CATEGORY	CAREER HIGHS
3, Five Times (last vs. USC, 11/23)	Kills 3, 6 Times (last vs. USC, 11/23/12)
9, vs. Notre Dame (8/24)	Total Attacks 9, vs. Notre Dame (8/24/12)
66, at Stanford (10/12)	Assists 66, at Stanford (10/12/12)
3, vs. Arizona (10/7)	Aces 3, vs. Arizona (10/7/12)
16, at Stanford (10/12)	Digs 16, at Stanford (10/12/12)
1, vs. Colo. (10/19) & vs. UW (10/28)	Block Solos 1, v. CU (10/19/12) & v. UW (10/28/12)
6, at Hawai'i (9/9)	Block Assists 6, at Hawai'i (9/9/12)
6 (0-6), at Hawai'i (9/9)	Total Blocks 6 (0-6), at Hawai'i (9/9/12)
6.0, Four Times (last vs. USC, 11/23)	Points 6.0, Four Times (last vs. USC, 11/23/12)

12 ... had 29 assists, six digs, five blocks and three kills in three sets versus Ohio State on Sept. 2 ... posted 31 assists, two kills and three blocks against Quinnipiac on Aug. 26.

LAKEWOOD HIGH SCHOOL

Moenoa was a four-year varsity setter at Lakewood High School in Lakewood, Calif. ... was named an ESPN Rise All-American, CIF First Team and Moore League Co-Player of the Year as a senior, ranking 10th on PrepVolleyball's Senior Aces list ... earned Moore League Co-POY as a junior in 2009 and was also a three-time Press Telegram Dream Team honoree, a four-team All-League winner and a two-time Lakewood High School Athlete of the Year ... coached by Mike Wadley ... helped the Lancers to the 2007 State Championship, also helping her team reach the CIF semifinals in '10 ... was selected to the U.S. Women's Junior National Training Team in 2010 ... played club with Mizuno Long Beach, which were gold medalists at the 2009 Junior Nationals ... also aided Mizuno to silver at the 2008 Junior Nationals, receiving All-Tournament Team honors.

PERSONAL

Born Megan Alexandra Moenoa on July 8, 1993 in Bellflower, Calif. ... parents are Kathie and Joe Moenoa ... has an older brother, Jeremy ... chose to attend UCLA because it is close to home and important to her that her family would be able to watch her play ... favorites include the Los Angeles Lakers, the TV show "Khloe & Lamar", the movie "The Blind Side" and singers Tupac, Drake and Beyonce ... thing she loves the most about volleyball is scheming and finding ways to win ... hobbies include listening to music and spending quality time with her family and friends ... biggest athletic thrill in her career was beating #1-ranked Harvard-Westlake in the second round of the playoffs in 2010 ... favorite academic classes are english and math ... undecided on a major.



#10 BOJANA TODOROVIC
LIBERO/OUTSIDE HITTER
5-11 • SENIOR
IRVINE, CALIF.

2012

Todorovic has appeared in 28 matches and is tops on the team with 3.90 digs per set to go with 15 service aces (third on team) ... has 60-career, double-figure digs contests and 20 this season ... recorded 18 digs against USC on Nov. 23 ... had 22 digs, her eighth-career match with at least 20 and sixth of the year, to go with two aces against Stanford on Nov. 16 ... posted six digs and a dig-kill versus California on Nov. 15 ... posted 15 digs and two aces at Utah on Nov. 10 ... had nine digs and an ace at Colorado (Nov. 9) ... had 17 digs and an ace at Arizona State on Nov. 3 and nine digs at Arizona on Nov. 2 ... recorded a career-high 26 digs against Washington on Oct. 28 ... had a personal-best eight assists to go with 16 digs versus Washington State on Oct. 26 ... posted 10 digs against both Colorado (Oct. 19) and Utah (Oct. 17) ... had 14 digs and an ace at California on Oct. 14 ... tallied 22 digs at Stanford (Oct. 12) ... posted six digs and an ace against both Arizona (Oct. 7) and Arizona State (Oct. 5), including a dig-kill vs. ASU ... notched 11 digs at Washington State (Sept. 28) and 19 at Washington (Sept. 26) ... had 17 digs against Oregon State (Sept. 21) ... recorded 22 digs at USC on Sept. 19 ... posted 20 digs at Colorado State on Sept. 15 ... produced 15 digs and an ace against Pepperdine (Sept. 12) ... had 20 digs with an ace at Hawai'i (Sept. 9) ... posted 11 digs against San Diego State (Sept. 8) and seven with an ace versus Idaho (Sept. 7) ... had eight digs and one ace on Aug. 31 against Northeastern ... posted 18 digs and seven assists at Nebraska (Aug. 25) and 16 digs and two aces versus Notre Dame on Aug. 24 ... named to the Pac-12 All-Academic honorable mention team.

2011

Played in 34 matches (20 starts) and 120 sets, leading the team with 39 aces, while averaging 2.28 digs (third on the squad) and 0.73 kills per set ... had at least two aces in a match nine times and double figures in digs on 12 occasions ... was second among Pac-12 players in service aces per set (0.32) ... recorded 18 digs in the National Championship match against Illinois (Dec. 17) and six in the National Semifinal versus Florida State (Dec. 15) ... had three kills and three digs against Penn State on Dec. 9 and four digs and one ace on Dec. 10 versus Texas ... had 13 digs against San Diego on Dec. 3 ... added two aces and four digs versus Maryland Eastern Shore on Dec. 2 ... posted three kills and two digs on Nov. 25 against USC ... tallied 13 digs at Oregon State on Nov. 12 ... added nine digs with three aces on Nov. 11 at Oregon ... notched 10 digs on Nov. 4 against Washington ... added seven digs and an ace versus Washington State on Nov. 6 ... recorded three aces with 12 digs at California on Oct. 28 and a pair with eight digs on Oct. 29 at Stanford ... tallied eight digs on Oct. 21 against Colorado and nine on Oct. 22 versus Utah ... posted 10 digs on Oct. 15 against Oregon ... had six kills, 10 digs, two aces and three blocks at Arizona on Oct. 8 ... recorded a second straight match with no hitting errors on Oct. 7 at Arizona State, posting 14 kills in 25 attempts for a .560 hitting percentage to go with nine digs, three blocks and an ace ... notched 12 kills and no errors in 16 swings for a career-high .750 percentage with 12 digs, two blocks and an ace at Colorado on Oct. 2 ... was just shy of a double-double with 10 kills and nine digs at Utah on Sept. 30 ... had two double-doubles and four double-figure kills matches ... had 16 digs against Stanford on Sept. 23 and seven versus Cal on Sept. 24 ... had eight aces on Aug. 27 against Fullerton, which tied a school record (Liz Masakayan, vs. San Diego State, 10/19/83) ... the eight aces also set a school record for aces in a three-set match (Elaine Youngs, 7, vs. Colorado, 11/13/92) ... added five aces and 12 digs against Long Beach on Sept. 1 and four aces with eight kills versus Quinnipiac on Aug. 26 ... had her first double-double of the year with 11 kills, 10 digs and two aces vs. Ohio State on Sept. 2 ... posted 12 digs at Hawai'i (Sept. 4) ... was named the LMU Invitational MVP ... named to the Pac-12 All-Academic honorable mention team.

2010

Was second on the team with 2.58 digs per set and third with 0.22 service aces per set, adding 1.52 kills per set ... appeared in all 31 matches, making 22 starts ... posted five double-doubles, 14 double-figure digs matches and eight double-figure kills contests ... surpassed the 20-dig mark for the first time in her career on Oct. 15 at Arizona with a season-best 25 and followed that up with 11 kills and 20 digs at Arizona State the next evening ... had four straight matches with double figures in kills

SEASON HIGHS	CATEGORY	CAREER HIGHS
1, vs. ASU (10/5) & vs. California (11/15)	Kills	21, vs. USC (11/26/10)
1, 3 Times (last vs. California, 11/15)	Total Attacks	41, vs. USC (11/26/10)
-	Hit % (Min. 10K)	.750 (12-0-16), at Colorado (10/2/11)
8, vs. Washington State (10/26)	Assists	8, vs. Washington State (10/26/12)
2, Three Times (last vs. Stanford, 11/16)	Aces	8, vs. Cal State Fullerton (8/27/11)
26, vs. Washington (10/28)	Digs	26, vs. Washington (10/28/12)
-	BS	1, vs. OSU (10/24/09) & vs. Kansas St. (8/27/10)
-	BA	5, vs. Stanford (10/2/09 and 10/31/09)
-	TB	5 (0-5), vs. Stanford (10/2/09 & 10/31/09)
2.0, Four Times (last vs. Stanford, 11/16)	Points	21.5, vs. USC (11/26/10)

from Nov. 6-19, adding at least 10 digs in three of those contests ... notched 14 kills and 10 digs at California (Nov. 6), 10 kills against Arizona State (Nov. 12), 10 kills, 11 digs and a season-best three aces versus Arizona (Nov. 13) and 15 kills, 12 digs and two aces at Oregon (Nov. 19) ... registered a career-high 21 kills to go with 12 digs against USC on Nov. 26 ... had 17 kills and nine digs in the first round of the NCAA Tournament against American on Dec. 3, adding 17 digs and two aces in the second round on Dec. 4 at Texas ... produced double figures in digs in four straight matches from Oct. 9-22 and Nov. 13-26 ... had 10 digs and a season-best four blocks at Oregon State on Nov. 21 ... tallied 16 digs against Stanford (Oct. 9), 15 at USC (Sept. 24) and Stanford (Nov. 5), 11 against UC Irvine (Sept. 18) and Oregon State (Oct. 22) and 10 versus Saint Mary's (Sept. 3) ... hit .529 with 11 kills and only two errors in 17 attacks to go with eight digs at Washington State on Oct. 1 ... posted at least two aces in a match eight times ... named Pac-10 All-Academic honorable mention.

2009

Was named to the All-Pac-10 Freshman team after leading the Bruins with 31 aces ... ranked eighth in the Pac-10 in service aces per set (0.26) ... placed third on the team with 2.54 digs per set and 604 attacks ... played in all 33 matches and 119 sets, making 19 starts ... produced six matches with double figures in kills and 14 contests with at least 10 digs ... had four double-doubles ... tied a season high with 14 kills to go with 13 digs, a .345 hitting percentage and 16.5 points against California on Oct. 3 ... tallied 10 kills and 11 digs at Washington (Oct. 16), 14 kills, 10 digs, five blocks and a season-high 17.5 points at Stanford (Oct. 31) and 11 kills and 14 digs against Baylor (Dec. 5) ... added an 11-kill match at Arizona State on Sept. 25 and had 10 at Nebraska on Sept. 13 ... had at least seven kills in nine additional matches ... hit .600 with seven kills and one error in 10 attacks against Arizona (Nov. 27) ... tallied a season-best 16 digs with three aces against Fordham on Sept. 19 ... had five straight matches with at least 10 digs from Oct. 3-23 and then four in a row from Oct. 31-Nov. 14 ... notched 15 digs against USC (Nov. 6), Washington State (Nov. 13) and Washington (Nov. 14) ... produced at least one ace in 18 of her 33 contests, including a pair or more in nine of them ... posted a season-best four aces at Pepperdine (Sept. 16) ... had three to go along with nine kills and 13 digs in the NCAA first-round match against Long Beach State (Dec. 4) ... registered at least three blocks in a match six times, including five against Stanford on Oct. 2 ... had a season-best four assists in four contests.

UNIVERSITY HIGH SCHOOL

Todorovic played four years of varsity volleyball at University High School in Irvine, Calif. ... named All-City all four years and All-County as a senior ... posted 347 kills, 215 digs and 38 aces in her final year, earning All-City MVP honors ... helped the Trojans to a CIF championship as a freshman ... was an Orange County All-Star Game Most Valuable Player ... named to Volleyball Magazine's Fab 50 ... coached by Scott Bruce ... played club with Laguna Beach Volleyball ... won the bronze medal at the 2007 and 2009 USA Volleyball Junior Olympics ... earned All-Tournament honors in '08 and '09 ... participated in the USA A2 camp.

PERSONAL

Born Bojana Todorovic on Oct. 28, 1991 in Belgrade, Serbia ... parents are Dusan and Maja Todorovic ... has an older brother, Dimitrije ... says the thing she likes the most about volleyball is the adrenaline rush of an intense, close match ... biggest athletic thrill was the 2011 National Championship match and how unified the team felt on and off the court ... favorites include the TV shows "Suits", "Game of Thrones" and "So You Think You Can Dance", actor Robin Williams and eating apples ... athlete she admires the most is all of them, as it takes heart and passion to be an athlete at all levels which is something to admire in itself ... majoring in economics.

CAREER STATISTICS

YEAR	SP	MP-MS	K	K/SET	E	TA	PCT	A	A/SET	SA	SA/SET	SE	RE	DIG	DIG/SET	BS	BA	TOT	BLK/S	BE	BHE	PTS	P/SET
2009	119	33-19	186	1.56	90	604	.159	47	0.39	31	0.26	29	20	302	2.54	1	30	31	0.26	7	2	233.0	1.96
2010	113	31-22	172	1.52	66	461	.230	21	0.19	25	0.22	38	10	292	2.58	1	21	22	0.19	3	1	208.5	1.84
2011	120	34-20	87	0.73	31	215	.260	22	0.18	39	0.32	19	10	273	2.28	0	10	10	0.08	3	0	131.0	1.09
2012	100	28-1	2	0.02	1	3	.333	93	0.93	15	0.15	26	18	390	3.90	0	0	0	0.00	2	2	17.0	0.17
TOTALS	452	126-62	447	0.99	188	1283	.202	183	0.40	110	0.24	112	58	1257	2.78	2	61	63	0.14	15	5	589.5	1.30



#11 RACHAEL KIDDER
OUTSIDE HITTER
6-3 • SENIOR
MOORPARK, CALIF.

2012

Kidder is second on the team with 4.00 kills and 4.48 points per set ... also has 1.32 digs and 0.61 blocks per set ... has double figures in kills in 25 matches (77 career) ... recorded 18 kills, nine digs, four blocks and an ace against USC on Nov. 23 ... had eight kills and five digs at Oregon on Nov. 20 ... posted 21 kills, a .362 hitting percentage and nine digs against Stanford on Nov. 16 ... had 14 kills and hit .370 versus California on Nov. 15 ... tallied 19 kills at Utah on Nov. 10 ... had a career-best hitting percentage of .579 with 12 kills and only one error in 19 attempts at Colorado (Nov. 9) ... notched 14 kills and three blocks at Arizona State (Nov. 3) and 10 kills at Arizona (Nov. 2) ... had 18 kills against Washington on Oct. 28 and nine versus Washington State on Oct. 26 ... recorded 13 kills and four blocks against Colorado on Oct. 19 ... added 13 kills versus Utah (Oct. 17) ... tallied 11 kills at California on Oct. 14 ... had a season-best 25 kills at Stanford on Oct. 12 to go with 10 digs for her fourth double-double of the season and 14th of her career, adding an ace and three blocks ... notched 13 kills, a .333 hitting percentage and five blocks on Oct. 7 against Arizona ... had seven kills and

an ace versus Arizona State (Oct. 5) ... had 18 kills, a .429 hitting percentage, eight digs and an ace at Washington State (Sept. 28) ... posted 19 kills and five blocks with eight digs and an ace at Washington on Sept. 26 ... had 14 kills and an ace against Oregon State (Sept. 21) ... notched 18 kills and six digs at USC on Sept. 19 ... posted 13 kills and 11 digs to go with five blocks and an ace at Colorado State on Sept. 15 ... had 14 kills, seven digs and three blocks against Pepperdine (Sept. 12) ... was named to the All-Tournament Team at the Verizon Volleyball Challenge in Hawai'i ... had 16 kills and 12 digs for a double-double at Hawai'i (Sept. 9) ... posted 13 kills against San Diego State (Sept. 8) and 11 kills and a .450 hitting percentage versus Idaho (Sept. 7) ... had 14 kills and three blocks on Sept. 1 at UC Santa Barbara ... posted a double-double with 14 kills and 10 digs to go with four blocks at Nebraska on Aug. 25 ... notched 18 kills and seven digs against Notre Dame on Aug. 24.

2011

Started all 34 matches she appeared in (122 sets) and led the Bruins with 4.70 kills per set and 5.24 points per set ... also averaged 2.00 digs and 0.70 blocks per set ... named AVCA All-America, All-Pacific Region and All-Pac-12 First Team ... was ninth in the nation in kills and points per set ... second among Pac-12 players in kps and third in pps ... her 574 kills were the most in one season at UCLA in the rally scoring era (2001), while her 1,420 attacks were the second most in one year in Bruin history ... had 10 matches with at least 20 kills and 32 double-figure kills contests (20 in a row to end the season) ... led the Bruins in kills for a match 29 times ... was named the Most Outstanding Player of the NCAA Tournament, recording 20 kills, eight digs and three blocks in the National Championship match against Illinois ... added 21 kills and 12 digs (eighth double-double of the season) in the National Semifinal versus Florida State, hitting .462 with only three errors in 39 attempts ... was named the MOP of the Lexington Regional, posting 26 kills in the Regional Championship on Dec. 10 against Texas with a .417 hitting percentage ... hit .355 with 15 kills and an ace against Penn State on Dec. 9 ... recorded 17 kills, six blocks (tied a career high) and four digs against San Diego on Dec. 3 and 11 kills, five digs, three blocks and an ace on Dec. 2 versus Maryland Eastern Shore ... posted 18 kills, five digs and four blocks on Nov. 25 against USC ... produced 21 kills and a .425 hitting percentage with nine digs and two blocks on Nov. 20 against Arizona State ... added 15 kills, seven digs and three blocks on Nov. 18 versus Arizona ... had a pair of double-doubles in consecutive matches with 15 kills and 10 digs at Oregon on Nov. 11 and 18 kills and 11 digs to go with five blocks on Nov. 12 at Oregon State ... had 19 kills and an ace against Washington on Nov. 4 and 13 kills and two blocks versus Washington State on Nov. 6, adding eight digs in both contests ... was named Pac-12 Offensive Player of the Week (Oct. 31) for the second time after leading the Bruins with 22 kills and seven digs on Oct. 28 at California and 16 kills and four digs at Stanford on Oct. 29 ... produced a team-best 23 kills and only two errors in 37 attempts for a season-high .568 hitting percentage on Oct. 22 against Utah, adding nine digs and three blocks ... posted a double-double with a team-high 13 kills and 12 digs on Oct. 21 versus Colorado ... had a team-best 17 kills to go with seven digs against Oregon on Oct. 15 ... produced a double-double with 26 kills and a career-best 14 digs at Arizona on Oct. 8, adding four blocks ... added 14 kills, five digs and four blocks on Oct. 7 at Arizona State ... had 18 kills and eight digs on Sept. 30 at Utah ... set a new career high with 30 kills to go with eight digs and three blocks against Stanford on Sept. 23 ... the 30 kills marked the 38th time in UCLA history a player had reached 30 kills and the first since Oct. 11, 2001 (Kristee Porter) ... the 30 kills were also tied for the most for a Bruin during the rally-scoring era, which began in 2001, and the 77 attempts were the most for any UCLA player in the rally-scoring era ... added 12 kills versus California on Sept. 24 ... recorded a double-double with 10 digs and 16 kills with only three errors in 30 swings (.433) at Washington on Sept. 17 ... added 10 kills at Washington State (Sept. 16) ... produced a double-double with 13 kills and 11 digs versus Cal State Northridge on Sept. 12 ... had 14 kills and no errors at USC on Sept. 9, hitting .483 and adding seven digs ... posted 25 kills to go with nine digs and five blocks at Pepperdine

SEASON HIGHS

SEASON HIGHS	CATEGORY	CAREER HIGHS
25, at Stanford (10/12)	Kills	30, vs. Stanford (9/23/11)
83, at Stanford (10/12)	Total Attacks	83, at Stanford (10/12/12)
.579 (12-1-19), at Colorado (11/9)	Hit % (Min. 10K)	.579 (12-1-19), at Colorado (11/9/12)
1, Nine Times (last vs. USC, 11/23)	Aces	4, vs. Fordham (9/19/09)
12, at Hawai'i (9/9)	Digs	14, at Arizona (10/8/11)
3, at Nebraska (8/25) & at Colo. St. (9/15)	BS	3, 4 Times (last at Colorado St., 9/15/12)
5, at Washington (9/26) & vs. Arizona (10/7)	BA	6, vs. Ford. (9/19/09) & vs. Ore. (10/23/09)
5, Three Times (last vs. Arizona, 10/7)	TB	6, Five Times, last vs. San Diego (12/3/11)
27.5, at Stanford (10/12)	Points	33.0, vs. Stanford (9/23/11)

on Sept. 7 ... was named Pac-12 Offensive Player of the Week and the Most Outstanding Player of the Rainbow Wahine Volleyball Classic after posting three matches with double figures in kills in Hawai'i ... had a double-double on Sept. 4 at Hawai'i with 17 kills and 12 digs to go with two aces and six blocks, which equaled a personal best ... led the Bruins in kills in their other two wins with 18 against Long Beach State (Sept. 1) and 15 versus Ohio State (Sept. 2), posting six digs in both contests and adding four blocks against LBSU ... produced 13 kills and seven digs against Cal State Fullerton on Aug. 27 ... named to the Pac-12 All-Academic honorable mention team.

2010

Was named to the All-Pacific-10 Conference honorable mention team after finishing second on the squad with 3.47 kills per set and 3.90 points per set and fourth with 0.61 blocks per set ... was second on the squad with 20 double-figure kills matches, including four contests with at least 20 kills ... produced double-doubles in back-to-back matches on Oct. 9 and 15 ... registered a season-high 25 kills, 11 digs and 28.5 points to go with four blocks against Stanford on Oct. 9 ... followed that with 18 kills, 11 digs and four roofs at Arizona on Oct. 15 ... posted 15 straight matches with double figures in kills from Oct. 8-Nov. 26 ... notched 24 kills and six digs against Washington (Oct. 29), 23 kills, six digs and two aces versus Oregon State (Oct. 22) and 22 kills in the second round of the NCAA Tournament at Texas (Dec. 4) ... had 17 kills, two aces and five digs against California on Oct. 8 ... tallied at least four blocks in nine matches ... tied a career high with six roofs at Cal on Nov. 6 to go with 14 kills ... had five blocks, 12 kills and five digs a night earlier at Stanford ... produced four blocks to go along with 11 kills against Saint Mary's (Sept. 3), 14 versus Arizona State (Nov. 12), 11 kills at Oregon (Nov. 19) and 14 at Oregon State (Nov. 21) ... had 15 kills against Arizona State (Oct. 16) and USC (Nov. 26), 14 versus USC (Sept. 24), Washington State (Oct. 31) and Arizona (Nov. 13), 13 at Hawai'i (Aug. 29), 11 against Pepperdine (Sept. 8) and 10 with seven digs versus Oregon (Oct. 23) ... hit .750 with nine kills and no errors in 12 attacks for a .750 hitting percentage in the season opener against Kansas State on Aug. 27.

2009

Appeared in all 33 matches, making one start (Fordham - Sept. 19) ... averaged 0.45 kills and blocks per set ... posted a season-high eight kills with a .429 percentage (8-2-14) against Virginia on Sept. 11 ... had three straight matches with at least six kills from Sept. 16-19 ... recorded six kills and three blocks at Pepperdine (Sept. 16), six kills and a .556 percentage (6-1-9) at Cal State Fullerton (Sept. 18) and seven kills against Fordham ... also produced season highs with four aces and 14.0 points and tied a season-high with six blocks against Fordham ... added four kills at Stanford on Oct. 31 ... had a six-block match against Oregon (Oct. 23) and a four-block contest against Washington State (Nov. 13).

MOORPARK HIGH SCHOOL

Kidder was a three-sport athlete at Moorpark High School in Moorpark, Calif. ... played four years of volleyball, two years of track and field and one season of basketball ... named All-Ventura County, All-Marmonte League and L.A. Daily News and Ventura County Star All-Area each season ... earned team MVP and Female Athlete of the Year honors as a senior ... was ranked 10th on the PrepVolleyball.com Senior Aces list and named to Volleyball Magazine's Fab 50 ... honored as the ESPN Rise California State Player of the Year as a sophomore and named to the ESPN Rise California All-State and AVCA Under Armour All-American Teams as a senior ... was a team captain each of her last two seasons ... produced 1,139 kills in her four years, including 406 as a senior ... added 586 digs, 228 blocks and 100 aces ... coached in volleyball by Brendan Hanson ... plays club with Sports Shack ... named to the 18 Open Gold Division All-Tournament Team at the USA Volleyball Girls' Junior Olympic Championships ... was a 2007 JO 18U National Division gold medalist with Point West Volleyball Club ... also won a gold medal with the 2008 Women's Junior National A2 Team at the High Performance Championships and was an 18U silver medalist with Sports Shack at the 2008 Volleyball Festival.

PERSONAL

Born Rachael Ann Kidder on Aug. 14, 1991 in Woodland Hills, Calif. ... parents are Sheryll and John Kidder ... father was a four-year offensive lineman on the Bruin football team ... has two sisters, Jessica and Katie ... number one reason for playing volleyball is because it is competitive, exciting and unpredictable ... favorites include the TV show "Friday Night Lights", singer Jason Aldean, NASCAR driver Tony Stewart and the movie "Miracle" ... states that UCLA has always been her favorite college and that she wanted to go here since she was a little girl ... majoring in sociology.

CAREER STATISTICS

YEAR	SP	MP-MS	K	K/SET	E	TA	PCT	A	A/SET	SA	SA/SET	SE	RE	DIG	DIG/SET	BS	BA	TOT	BLK/S	BE	BHE	PTS	P/SET
2009	106	33-1	48	0.45	22	126	.206	0	0.00	5	0.05	5	0	14	0.13	2	46	48	0.45	4	1	78.0	0.74
2010	110	31-23	382	3.47	198	989	.186	7	0.06	8	0.07	32	2	93	0.85	11	56	67	0.61	10	0	429.0	3.90
2011	122	34-34	574	4.70	225	1420	.246	9	0.07	12	0.10	37	2	244	2.00	21	65	86	0.70	14	1	639.5	5.24
2012	103	29-22	412	4.00	158	1076	.236	15	0.15	9	0.09	22	3	136	1.32	18	45	63	0.61	7	0	461.5	4.48
TOTALS	441	127-80	1416	3.21	603	3611	.225	31	0.07	34	0.08	96	7	487	1.10	52	212	264	0.60	35	2	1608.0	3.65



#12 MARIANA AQUINO
MIDDLE BLOCKER
6-3 • JUNIOR
CURITIBA, BRAZIL

2012

Aquino has played in 27 matches, leading the team with 20 aces and placing second with 0.92 blocks per set ... also has 1.09 kills per set and a .330 hitting percentage ... had six kills and only one error in eight swings (.625) against USC on Nov. 23 ... posted five blocks (20th-career match and ninth this season with at least five roofs), four digs and an ace at Oregon on Nov. 20 ... had five kills against Stanford (Nov. 16) and three kills and three blocks versus California (Nov. 15) ... had two aces, three kills, four digs and three blocks at Utah on Nov. 10 and five kills and no errors in eight attempts (.625) at Colorado on Nov. 9 ... recorded six blocks to go with five digs and an ace at Arizona State on Nov. 3 ... had five kills and five digs on Oct. 28 against Washington ... added a season-high eight blocks to go with three kills and an ace versus Washington State (Oct. 26) ... had four kills and no hitting errors in eight swings (.500) with a career-high four aces on Oct. 14 at California ... went 5-for-10 (.500) with no errors, five blocks, five digs and an ace at Stanford (Oct. 12) ... had four kills and no hitting errors in five attempts (.800) against Arizona on Oct. 7 ... notched five kills and no errors in seven swings (.714) with six blocks on Oct. 5 versus Arizona State ... posted seven kills and no errors in 16 attempts (.438) with five blocks and two aces on Sept. 26 at Washington ... had a season-best eight kills to go with an ace at USC on Sept. 19 ... had six blocks and an ace at Hawai'i on Sept. 9 ... recorded two aces against San Diego State (Sept. 8) ... notched six blocks, two aces and four kills and no errors in 10 attempts (.400) on Sept. 1 at UC Santa Barbara ... added four kills and no errors in seven attempts (.571) with three digs and two blocks against Northeastern (Aug. 31) ... posted three kills and five blocks at Nebraska (Aug. 25) and an ace and four blocks versus Notre Dame on Aug. 24.

2011

Appeared in 34 matches and 101 sets with 30 starts ... led the team with 1.12 blocks per set and held a .326 hitting percentage and 1.67 kills per set ... was ninth among Pac-12 players in hitting percentage and bps ... had four kills, four blocks and four digs in the National Championship match against Illinois on Dec. 17 and six kills and four blocks in the National Semifinal contest versus Florida State on Dec. 15 ... posted five kills in both matches during the Regional round, adding four blocks in the Final against Texas (Dec. 10) and three roofs in the Semifinal versus Penn State (Dec. 9) ... had a personal-best 11 blocks on Dec. 3 against San Diego, her third-career match with at least 10 roofs ... added nine kills and only error in 14 attempts for a .571 hitting percentage ... posted three kills and four blocks on Dec. 2 versus Maryland Eastern Shore ... had two kills, two aces and four blocks on Nov. 20 versus Arizona State ... set a career high with 11 kills to go with three blocks on Nov. 11 at Oregon ... had three double-figure kills matches on the year ... posted nine kills and only one error in 14 attempts (.571) with three blocks on Nov. 4 against Washington ... added five kills and no errors in 10 swings (.500) with three blocks on Nov. 6 versus Washington State ... notched 10 kills on Oct. 29 at Stanford, hitting a personal-best .444 with two errors in 18 attempts ... added seven kills and no errors in 20 swings (.350) on Oct. 28 at California ... had seven kills and only one error in 12 attacks (.500) on Oct. 21 against Colorado ... posted eight kills and six blocks against Oregon on Oct. 15 ... had five kills and no errors in eight attempts (.625) with an ace versus Oregon State on Oct. 14 ... notched six kills, four blocks and two aces on Oct. 8 at Arizona and four kills and four blocks on Oct. 7 at Arizona State ... produced seven kills and no errors in seven attempts for a perfect night at Utah on Sept. 30 ... had 10 kills and a career-high six digs on Sept. 24 against California ... recorded six blocks at Washington State on Sept. 16 ... had five kills and seven blocks at Pepperdine on Sept. 7 ...

CAREER STATISTICS

YEAR	SP	MP-MS	K	K/SET	E	TA	PCT	A	A/SET	SA	SA/SET	SE	RE	DIG	DIG/SET	BS	BA	TOT	BLK/S	BE	BHE	PTS	P/SET
2010	81	27-20	94	1.16	30	212	.302	5	0.06	3	0.04	6	0	25	0.31	8	61	69	0.85	8	0	135.5	1.67
2011	101	34-30	169	1.67	45	380	.326	12	0.12	12	0.12	26	0	52	0.51	3	110	113	1.12	13	0	239.0	2.37
2012	91	27-26	99	1.09	27	218	.330	16	0.18	20	0.22	28	1	48	0.53	4	80	84	0.92	15	0	163.0	1.79
TOTALS	273	88-76	362	1.33	102	810	.321	33	0.12	35	0.13	60	1	125	0.46	15	251	266	0.97	36	0	537.5	1.97

SEASON HIGHS	CATEGORY	CAREER HIGHS
8, at USC (9/19)	Kills	11, at Oregon (11/11/11)
16, at Washington (9/26)	Total Attacks	23, at Oregon (11/11/11)
--	Hit % (Min. 10K)	.444 (10-2-18), at Stan. (10/29/11)
4, at California (10/14)	Aces	4, at California (10/14/12)
5, 3 Times (last at Arizona State, 11/3)	Digs	6, vs. California (9/24/11)
1, 4 Times (last at Oregon, 11/20)	Block Solos	3, vs. American (12/3/10)
8, vs. Washington State (10/26)	Block Assists	11, vs. San Diego (12/3/11)
8 (0-8), vs. Washington State (10/26)	TB	11 (0-11), vs. San Diego (12/3/11)
11.5, at Washington (9/26)	Points	14.5, vs. San Diego (12/3/11)

tallied eight kills and 10 blocks at Hawai'i on Sept. 4, hitting .389 with only one error in 18 swings ... posted eight kills and no errors in 20 attempts (.400) with five blocks and two aces against Ohio State on Sept. 2 ... had four kills, six blocks and an ace against Cal State Fullerton on Aug. 27.

2010

Was named to the All-Pacific-10 Conference Freshman honorable mention team after finishing second on the club with 0.85 blocks per set and a .302 hitting percentage ... added 1.16 kills per set and 1.67 points per set ... produced nine matches with at least four blocks ... had a season-high 10 roofs on three solos and seven assists, to go with six kills and 12.5 points, in the first round of the NCAA Tournament against American on Dec. 3 ... posted seven kills and four blocks in the second round at Texas the following evening ... had five kills and one error in seven attempts for a .571 hitting percentage to go with seven blocks at Oregon State on Nov. 21 ... notched at least five kills and a .500+ hitting percentage on four occasions ... had a season-best eight kills with no errors in 12 swings for a .667 percentage against Washington (Oct. 29) ... tallied seven kills and no errors in 14 attacks (.500) with five roofs against Oregon State on Oct. 22 ... had five or more kills in 10 matches ... produced five kills and four blocks at San Jose State (Sept. 2) and five kills and six blocks against UC Riverside (Sept. 4) ... added seven kills at California on Nov. 6 and five twice against Washington State (Oct. 1 and 31) ... had a season-best four digs with four blocks against Arizona State on Nov. 12 ... added four roofs versus Penn (Sept. 17) and USC (Sept. 24) ... posted aces at Stanford (Nov. 5), California (Nov. 6) and Arizona (Nov. 13).

PITAGORAS CIDADE JARDIM/CLUB VOLLEYBALL

Aquino attended Pitagoras Cidade Jardim in Belo Horizonte, Brazil ... was selected to the 2006 and 2008 National Brazilian Junior Team ... finished second at the 2008 Brazilian National League School Championship ... placed fifth at the '07 and '08 Brazilian National Junior Team Championships and third in 2006 ... was third at the '07 National Youth Championship ... played club with Minas Tennis (2008-09), Positivo (2007), Circulo Militar/Dom Bosco (2006) and Parana (2004-05) ... helped Minas to first place at the '08 Local Junior Team Championship ... won Best Blocker Award at the 2006 Minas Tennis Club Championship ... finished first at the '05 Minas Tennis Championship, as well as the '04 and '05 Parana Cup.

PERSONAL

Born Mariana Thomaz de Aquino on May 2, 1991 in Curitiba, Brazil ... parents are Ana Maria and Paulo ... has a younger brother, Henrique ... chose UCLA so she can study and play volleyball and because Los Angeles is a great city ... biggest athletic thrill was playing for the Brazilian National Team ... favorites include the TV show "American Idol", actor Matthew McConaughey and singers Celine Dion, Christina Aguilera, Shania Twain and Demi Lovato ... thing she likes the most about volleyball is blocking and the No. 1 reason she chose to play volleyball was because it's a very competitive and intelligent sport ... enjoys singing, playing guitar, shopping, listening to music and going to the beach ... majoring in business.



#13 Zoë NIGHTINGALE
MIDDLE BLOCKER
6-3 • SOPHOMORE
SACRAMENTO, CALIF.

2012

Nightingale, an All-Pac-12 Honorable Mention selection, has started all 29 matches and is leading the team with 1.39 blocks per set to go with 1.48 kills per set ... also has a .372 hitting percentage, the best total on the team among hitters ... has 18-career matches (15 this season) with at least five blocks ... set a personal best with 14 blocks against USC on Nov. 23 ... three of the roofs were solo to go along with four kills ... posted five kills and no errors in 11 attempts (.455) with four blocks at Oregon on Nov. 20 ... had five kills and only one error in 10 attempts (.400) against Stanford on Nov. 16 and six kills and one miscue in 10 swings (.500) on Nov. 15 versus California ... had eight blocks to go with seven kills at Utah on Nov. 10 ... recorded her fifth-career, double-figure kills match and second of the year with 10 kills at Colorado, hitting a personal-best .643 with only one error in 14 attempts ... had seven blocks on Nov. 3 at Arizona State ... went for a career high in kills with 11 against Washington on Oct. 28, hitting .421 and adding four blocks ... posted five kills versus Washington State (Oct. 26) ... totaled seven blocks, including three solos, against Colorado on Oct. 19 ... had

six kills, six blocks and a .400 hitting percentage at California on Oct. 14 ... notched seven kills and seven blocks at Stanford (Oct. 12) ... recorded seven blocks against Arizona (Oct. 7) and five roofs with four kills versus Arizona State on Oct. 5 ... had nine kills and just one error in 14 swings (.571) with a career-best four digs and an ace at Washington State on Sept. 28 ... posted eight blocks at Washington (Sept. 26) ... also had nine kills and no errors in 18 attempts (.500 hitting percentage) against the Huskies ... had six roofs against Oregon State on Sept. 21 ... registered seven blocks and six kills at Colorado State on Sept. 15 ... had seven blocks at Hawai'i on Sept. 9 ... posted five roofs against San Diego State (Sept. 8) ... recorded six kills and no errors in eight attempts (.750) with her first two career service aces versus Idaho on Sept. 7 ... had eight kills and no hitting errors in 13 attempts (.615) with four blocks on Sept. 1 at UC Santa Barbara and was named to the UCSB Invitational All-Tournament Team ... added three kills and no errors in seven attempts (.429) with five blocks against Northeastern (Aug. 31) ... recorded five kills and six blocks against Notre Dame (Aug. 24) and six kills and four blocks versus Nebraska, hitting over .333 in both contests ... named to the Pac-12 All-Academic honorable mention team.

2011

Played in 30 matches (90 sets), making 25 starts ... averaged 1.41 kills and 0.81 blocks per set ... recognized on the Pac-12 All-Freshman honorable mention team ... named to the NCAA All-Tournament Team after recording eight kills and 11 blocks in the National Championship match against Illinois on Dec. 17 ... added three kills and three blocks in the National Semifinal versus Florida State on Dec. 15 ... posted five kills and three blocks on Dec. 10 in the Regional Final against Texas and four kills and no errors in 10 attempts with three blocks on Dec. 9 in the Regional Semifinal versus Penn State ... had two kills, three digs and a block against San Diego on Dec. 3 ... recorded four kills and three blocks at Oregon on Nov. 11 ... tied a season high with 10 kills and swung at a .600 hitting percentage with only one error in 15 attempts on Nov. 4 against Washington ... equaled a season best with 10 kills on

SEASON HIGHS	CATEGORY	CAREER HIGHS
11, vs. Washington (10/28)	Kills	11, vs. Washington (10/28/12)
19, vs. Washington (10/28)	Total Attacks	26, vs. Long Beach State (9/1/11)
.643 (10-1-14), at Colorado (11/9)	Hit % (Min. 10K)	.643 (10-1-14), at Colorado (11/9/12)
2, vs. Idaho (9/7)	Service Aces	2, vs. Idaho (9/7/12)
4, at Washington State (9/28)	Digs	4, at Washington State (9/28/12)
3, vs. Colo. (10/19) & vs. USC (11/23)	Block Solos	4, vs. California (9/24/11)
11, vs. USC (11/23)	Block Assists	11, vs. USC (11/23/12)
14 (3-11), vs. USC (11/23)	TB	14 (3-11), vs. USC (11/23/12)
13.5, vs. Washington (10/28)	Points	14.0, vs. Illinois (12/17/11)

Oct. 28 at California with only two errors in 19 attempts (.421) and three blocks ... had four kills and two blocks on Oct. 29 at Stanford ... posted eight kills and a team-best six blocks on Oct. 21 against Colorado ... had six kills and only one error in 11 attacks (.455) with three blocks on Oct. 22 versus Utah ... notched a season-high 10 kills to go with two blocks on Oct. 14 against Oregon State ... added three kills and three blocks on Oct. 15 versus Oregon ... produced six kills and only one error in 14 attempts (.357) on Oct. 8 at Arizona with two blocks ... was named Pac-12 Freshman of the Week on Sept. 26 after recording six kills and a team-high seven blocks against California on Sept. 24 ... had no hitting errors in 11 swings, also posting four block solos ... recorded seven kills and only two errors in 12 swings (.417) at USC on Sept. 9, adding two blocks ... posted eight kills and four blocks against Long Beach State on Sept. 1 ... started both contests on Aug. 27 and had four kills against Cal State Fullerton and Loyola Marymount ... hit .444 with no errors in nine attempts against the Titans and hit .429 with one error in seven swings to go with two blocks versus the Lions.

ST. FRANCIS HIGH SCHOOL

Nightingale was a four-year letterwinner at St. Francis High School in Sacramento, Calif. ... was named the Sacramento Bee Player of the Year as a senior and was ranked 19th on PrepVolleyball's Senior Aces list ... earned three Delta River League Most Valuable Player, All-Metro First Team and All-City First Team awards ('08-'10) and a pair of All-CIF First Team honors ('09-'10) ... named Sacramento Female Athlete of the Year in 2011 ... received All-American accolades from PrepVolleyball, AVCA Under Armour, MaxPreps and ESPN Rise ... produced 1,236 kills and 1,146 digs in her four years at St. Francis ... helped the Troubadours to four straight undefeated league titles, a Division II Section championship as a junior and a Division I second-place finish as a senior ... led St. Francis in kills (423), blocks (88) and digs (360) as a senior and was first in the CIF Sac-Joaquin Section in blocks with 109 and digs with 428 as a junior (fourth with 415 kills) ... coached by Alyn Wright ... played club with Force Volleyball ... participated in Junior Nationals from 2006-11.

PERSONAL

Born Zoë Anne Nightingale on June 8, 1993 in Sacramento, Calif. ... parents are Cheryl and Jeffrey Nightingale ... has one younger sister, Noa ... says the top reasons she competes in volleyball are the highs and lows of the game and cheering with her team after someone gets an amazing block or kill at a crucial point ... favorites include the TV show "Flight of the Concorde", the movie "Bridesmaids", P.F. Chang's lettuce wraps and the San Francisco Giants ... chose to attend UCLA because of the great team, great coaches, great degree and great area ... hobbies include going to the beach, yoga, pretending to surf, hiking and roaming around ... favorite classes are anatomy and physiology ... undecided on a major.

CAREER STATISTICS

YEAR	SP	MP-MS	K	K/SET	E	TA	PCT	A	A/SET	SA	SA/SET	SE	RE	DIG	DIG/SET	BS	BA	TOT	BLK/S	BE	BHE	PTS	P/SET
2011	90	30-25	127	1.41	53	301	.246	4	0.04	0	0.00	4	1	19	0.21	12	61	73	0.81	7	0	169.5	1.88
2012	105	29-29	155	1.48	35	323	.372	9	0.09	4	0.04	2	4	26	0.25	18	128	146	1.39	11	0	241.0	2.30
TOTALS	195	59-54	282	1.45	88	624	.311	13	0.07	4	0.02	6	5	45	0.23	30	189	219	1.12	18	0	410.5	2.10



#14 MEG NORTON
DEFENSIVE SPECIALIST/LIBERO
5-11 • JUNIOR
PACIFIC PALISADES, CALIF.

Barbara on Sept. 1 ... tallied 12 digs and a kill at Nebraska on Aug. 25 and six digs on Aug. 24 against Notre Dame ... named to the Pac-12 All-Academic honorable mention team.

2011

Played in 24 matches (58 sets), starting three times, and averaged 1.97 digs per set with six aces ... had five double-figure digs matches ... appeared in three sets in the National Championship match against Illinois on Dec. 17, tallying one dig ... recorded four digs in both the Regional Final against Texas (Dec. 10) and the Regional Semifinal versus Penn State (Dec. 9) ... posted six digs against San Diego on Dec. 3 ... had six digs on Nov. 18 against Arizona ... had five digs in one set at Oregon on Nov. 11 and two digs and an ace in three sets at Oregon State on Nov. 12 ... had five digs in three sets on Oct. 29 at Stanford ... posted 10 digs at Arizona State on Oct. 7, adding two aces ... had six digs and an ace at Arizona on Oct. 8 ... had a season-best 11 digs vs. Cal State Northridge on Sept. 12 and 10 versus Utah (Sept. 30), California (Sept. 24) and Pepperdine (Sept. 7) ... added nine digs at Colorado on Oct. 2 and had an ace versus Cal ... started the season opener against Quinnipiac (Aug. 26), posting a team- and career-best 11 kills to go with eight digs and one block ... named to the Pac-12 All-Academic honorable mention team.

2012

Norton has played in all 29 matches and is averaging 2.02 digs per set with 14 aces ... recorded 13 digs, her 15th-career, double-figure digs match and seventh of the season, against USC on Nov. 23 ... had six digs at Oregon on Nov. 20 ... posted eight digs and an ace against Stanford on Nov. 16 and five digs and a kill versus California on Nov. 15 ... had five digs at Utah (Nov. 10) and four with an ace at Colorado (Nov. 9) ... recorded 11 digs and an ace at Arizona State on Nov. 3 ... had eight digs against Washington (Oct. 28) and six versus Washington State (Oct. 26) ... posted six digs and an ace against Colorado on Oct. 19 ... had four digs and two aces versus Utah (Oct. 17) ... totaled nine digs and two aces at California on Oct. 14 ... had a career-high 18 digs at Stanford on Oct. 12 ... had four digs and an ace against Arizona on Oct. 7 ... had four digs and an ace at Washington State (Sept. 28) ... posted 11 digs at Washington on Sept. 26 with an ace ... had six digs against Oregon State (Sept. 21) and eight at USC (Sept. 19) ... had 10 digs at Colorado State on Sept. 15 ... posted six digs against Pepperdine (Sept. 12) ... had five digs at Hawai'i on Sept. 9 ... recorded 14 digs at UC Santa

SEASON HIGHS

SEASON HIGHS	CATEGORY	CAREER HIGHS
1, Three Times (last vs. USC, 11/23)	Kills	11, vs. Quinnipiac (8/26/11)
2, Three Times (last vs. USC, 11/23)	Total Attacks	25, vs. Quinnipiac (8/26/11)
--	Hit % (Min. 10K)	.381 (10-2-21), at CSUB (9/9/10)
2, at California (10/14) & vs. Utah (10/17)	Aces	3, at Oregon (11/19/10)
18, at Stanford (10/12)	Digs	18, at Stanford (10/12/12)
--	Block Solos	1, vs. Washington State (10/31/10)
--	Block Assists	2, vs. Penn (9/17/10)
--	Total Blocks	2 (0-2), vs. Penn (9/17/10)
2.0, at Cal (10/14) and vs. Utah (10/17)	Points	11.5, vs. Quinnipiac (8/26/11)

2010

Played in 22 matches and 60 sets, making one start at Oregon on Nov. 19 ... had 22 kills, 77 digs (1.28 digs per set), four aces and four blocks ... posted a season-best 10 kills and only two errors in 21 attacks for a .381 hitting percentage in only two sets at CSU Bakersfield on Sept. 9 ... recorded three double-figure digs contests ... had 12 digs and her first career ace at California on Nov. 6 ... added 12 digs against USC (Nov. 26) and 10 with a season-high three aces at Oregon ... produced eight digs against Arizona (Nov. 13), seven digs with one kill in the first round of the NCAA Tournament versus American (Dec. 3) and six against Arizona State (Nov. 12) ... notched six kills and only one error in 10 swings (.500) against Penn on Sept. 17, adding two blocks ... had two kills against UC Riverside (Sept. 4) and at Washington State (Oct. 1).

HARVARD-WESTLAKE HIGH SCHOOL

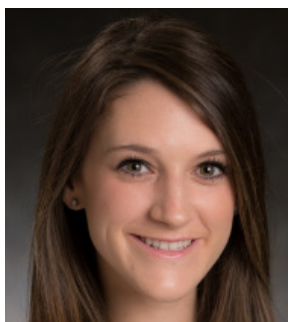
Norton played both volleyball and track at Harvard-Westlake High School in North Hollywood, Calif. ... was a three-time Mission League MVP ... named All-Area Player of the Year as a senior ... was All-Area and All-CIF first team her final two seasons ... earned Tournament Most Valuable Player honors after helping the Wolverines to a State title in 2007 ... was named a State Division III Athlete of the Year finalist as a sophomore ... coached by Adam Black ... named a Top 25 Sophomore and Senior Ace by PrepVolleyball.com ... played club with Sunshine and was named to the All-Tournament Team at the Junior Olympics in 2009 ... her team finished fifth at JO's in '08 and '09.

PERSONAL

Born Megan Katharine Norton on Dec. 4, 1991 in Santa Monica, Calif. ... parents are Suzanne and Richard ... has two older brothers, Michael and Patrick ... father and grandparents went to UCLA ... lists the No. 1 reason for competing in volleyball as the feeling you get after making a diving save to win a point ... favorites include the TV show "Entourage", the Los Angeles Lakers and singer Kid Cudi ... biggest athletic highlight was winning a State title with Harvard-Westlake and earning MVP honors ... hobbies include going to the beach, reading and paddleboarding ... thing she likes the most about volleyball is being part of a team and being able to compete together ... majoring in business/economics.

CAREER STATISTICS

YEAR	SP	MP-MS	K	K/SET	E	TA	PCT	A	A/SET	SA	SA/SET	SE	RE	DIG	DIG/SET	BS	BA	TOT	BLK/S	BE	BHE	PTS	P/SET
2010	60	22-1	22	0.37	9	63	.206	7	0.12	4	0.07	5	3	77	1.28	1	3	4	0.07	2	0	28.5	0.47
2011	58	24-3	11	0.19	6	29	.172	4	0.07	6	0.10	6	3	114	1.97	0	1	1	0.02	0	0	17.5	0.29
2012	100	29-16	3	0.03	3	14	.000	11	0.11	14	0.14	7	14	202	2.02	0	0	0	0.00	0	0	17.0	0.17
TOTALS	218	75-20	36	0.17	18	106	.170	22	0.10	24	0.11	18	20	393	1.80	1	4	5	0.02	2	0	63.0	0.29



#15 HANNAH BOLAND
OUTSIDE HITTER/MIDDLE BLOCKER
6-2 • FRESHMAN
SUNNYVALE, CALIF.

Mention as a senior ... had 369 kills, 26 aces and 110 blocks in her final season, also serving as a team captain ... helped the Gators to a Central Coast Section Championship in 2011, Division V NorCal

2012

Boland has played in 11 matches and is averaging 1.00 kills and 0.60 blocks per set in 20 sets ... tied a season high with four kills to go with a block solo against Utah on Oct. 17 ... had a kill, a block and a dig in one set at California on Oct. 14 ... started at Washington State on Sept. 28 and had three kills and no errors in five swings with one block ... had a career-high four kills against Oregon State on Sept. 21 ... posted one kill in one set at USC (Sept. 19) ... made her first-career start on Sept. 15 at Colorado State, notching two kills and four blocks ... recorded two kills and no errors in three attempts with one block on Sept. 7 against Idaho ... made her collegiate debut in the third set against Northeastern on Aug. 31, posting three kills in six attempts with three blocks (one solo).

CASTILLEJA HIGH SCHOOL

Boland was a four-year, middle blocker/outside hitter at Castilleja High School in Palo Alto, Calif. ... was a three-time, First Team West Bay Athletic League honoree (2009-11) ... named to the MaxPreps California All-State Division V First Team and was San Jose Mercury News All-Area Honorable

SEASON/CAREER HIGHS

Kills	4, vs. Oregon State (9/21/12) and vs. Utah (10/17/12)
Total Attacks	9, vs. Utah (10/17/12)
Digs	1, at Colorado State (9/15/12) and at California (10/14/12)
Block Solos	1, vs. Northeastern (8/31/12) and vs. Utah (10/17/12)
Block Assists	4, at Colorado State (9/15/12)
Total Blocks	4 (0-4), at Colorado State (9/15/12)
Points	5.0, vs. Northeastern (8/31/12) and vs. Utah (10/17/12)

titles in '08 and '09 and a Division V State Championship in 2008 ... coached by Tracie Meskell ... played club with Vision Volleyball, serving as a team captain in 2012 ... earned bronze medals at the 18 Open Junior Olympics (2011-12) and the 17 Open JO's (2010) ... participated with USA Volleyball High Performance (2009-10).

PERSONAL

Born Hannah Katherine Boland on March 30, 1994 in Bristol, England ... parents are Sue and Michael Boland ... is an only child ... chose to attend UCLA because it has a perfect balance of athletics and academics ... things she likes the most about volleyball are the team spirit and the aggressive nature of the offense ... favorite academic class is English ... hobbies include swimming, snowboarding, going to concerts, and discovering new restaurants ... lists her biggest athletic thrill as having the opportunity to compete at the collegiate level ... athlete she admires the most is Olympian runner Oscar Pistorius ... favorites include actress Anne Hathaway, the band LCD Soundsystem, Olympic Gold-Medal winning gymnast Gabby Douglas and the TV show "Project Runway" ... majoring in global studies.

CAREER STATISTICS

YEAR	SP	MP-MS	K	K/SET	E	TA	PCT	A	A/SET	SA	SA/SET	SE	RE	DIG	DIG/SET	BS	BA	TOT	BLK/S	BE	BHE	PTS	P/SET
2012	20	11-3	20	1.00	7	40	.325	2	0.10	0	0.00	1	0	2	0.10	2	10	12	0.60	3	1	27.0	1.35



#17 KARSTA LOWE
OUTSIDE HITTER
6-4 • SOPHOMORE
RANCHO SANTA FE, CALIF.

2012

Lowe is third on the team with 2.04 kills and 2.30 points per set, adding a .330 hitting percentage ... also has 0.47 blocks per set ... has six double-figure kills matches this season and seven for her career ... recorded five kills and three blocks against USC on Nov. 23 ... posted 10 kills against Stanford on Nov. 16 ... had three kills in one set versus California on Nov. 15 ... tallied five kills at Utah on Nov. 10 ... had four kills at Arizona (Nov. 2) ... posted six kills and four blocks against Washington State on Oct. 26 ... had three kills in one set against Colorado on Oct. 19 ... notched five kills and no errors in six swings (.833) with two blocks against Arizona State on Oct. 5 ... posted five kills and no errors in seven attacks (.714) at Washington State on Sept. 28 ... produced eight kills at Washington (Sept. 26) ... had 13 kills and seven digs at USC on Sept. 19 ... recorded 10 kills and three blocks at Colorado State on Sept. 15 ... had seven kills and just one error in 14 attempts (.429) against Pepperdine (Sept. 12) ... was named to the Verizon Volleyball Challenge All-Tournament Team after posting 27 kills and a .535 hitting percentage in Hawai'i ... had nine kills and two errors in 17 attempts (.412) at Hawai'i (Sept. 9) ... posted 10 kills and no errors in 16 swings (.625) against San Diego State (Sept. 8) and eight kills and two errors in 10 attacks (.600) versus Idaho (Sept. 7) ... was named Pac-12 Defensive Player of the Week on Sept. 3 after her play at the UCSB Invitational, which earned her All-Tournament Team honors ... posted her first-career double-double with 14 kills and 11 digs on Sept. 1 at UC Santa Barbara ... hit .323 with six digs and an ace ... swung at a personal-best .632 hitting percentage with 12 kills and no errors in 19 attempts with eight digs, three blocks and her first-career ace against Northeastern on Aug. 31 ... had eight kills and only one error in four sets with four blocks at Nebraska (Aug. 25) ... named to the Pac-12 All-Academic honorable mention team.

2011

Played in 19 matches and 41 sets, posting 53 kills (1.29 kps) and 15 blocks ... appeared in one set in both the National Championship match against Illinois (Dec. 17) and the Regional Semifinal versus Penn State (Dec. 9), and played in two sets in the Regional Final against Texas (Dec. 10) ... had three kills in as many attempts with one block on Dec. 2 against Maryland Eastern Shore ... started and posted 12 kills on Nov. 25 against USC ... made her first career start on Nov. 20 against Arizona State

SEASON HIGHS	CATEGORY	CAREER HIGHS
14, at UC Santa Barbara (9/1)	Kills	14, at UC Santa Barbara (9/1/12)
31, at UC Santa Barbara (9/1)	Total Attacks	31, at UC Santa Barbara (9/1/12)
.632 (12-0-19), v. Northeastern (8/31)	Hit % (Min. 10K)	.632 (12-0-19), v. N'eastern (8/31/12)
1, vs. Northeastern (8/31) & at UCSB (9/1)	Aces	1, N'eastern (8/31/12) & at UCSB (9/1/12)
11, at UC Santa Barbara (9/1)	Digs	11, at UC Santa Barbara (9/1/12)
6, at UC Santa Barbara (9/1)	Block Assists	6, at UC Santa Barbara (9/1/12)
6 (0-6), at UC Santa Barbara (9/1)	Total Blocks	6 (0-6), at UC Santa Barbara (9/1/12)
18.0, at UC Santa Barbara (9/1)	Points	18.0, at UC Santa Barbara (9/1/12)

and had seven kills and a season-best five blocks ... had three kills and two blocks in four sets on Nov. 11 at Oregon ... had four kills and only one error in nine attempts in two sets on Oct. 28 at California ... played one set on Oct. 29 at Stanford ... had five kills on Oct. 21 against Colorado ... had five kills in as many attempts in three sets against Oregon State on Oct. 14 ... played in one set versus Oregon on Oct. 15 and had one block assist ... produced two kills and a block in one set at Colorado on Oct. 2 ... had four kills and two digs at Washington State on Sept. 16 ... posted two kills in two sets at Pepperdine on Sept. 7 ... played three sets at Hawai'i on Sept. 4 and had three kills and two blocks ... appeared in all three sets against Cal State Fullerton on Aug. 27, sporting three kills and no errors in six attempts with one block assist.

LA COSTA CANYON HIGH SCHOOL

Lowe played two years of varsity volleyball at La Costa Canyon High School in Carlsbad, Calif. ... named San Diego Section All-CIF, All-Avocado League and All-Academic First Team as a senior ... also earned San Diego Union Tribune Athlete of the Week honors in '10 ... paced LCC with 2.7 kills per set as a senior, adding 44 blocks and 31 digs ... helped the Mavericks to their seventh-straight, CIF Division I title ... coached by Pat McDougall ... played club with Encinitas Wave Volleyball, which qualified for the Open Division JO's in '10 and '11.

PERSONAL

Born Karsta Frances Lowe on Feb. 2, 1993 in San Diego, Calif. ... parents are Irene and Dalton Lowe ... has two older brothers, Roger and Griffin, who graduated from UCLA in 2011 and was a member of the Bruin men's rowing club team) ... chose to attend UCLA because of the combination of stellar academics and athletics ... favorites include the movie "Inception", the TV show "Friday Night Lights" and the San Diego Padres ... thing she likes the most about volleyball is working as a team to win ... hobbies include hiking, swimming and going to the beach ... biggest athletic thrill is winning CIF her junior year against Torrey Pines ... favorite academic class is history ... undecided on a major.

CAREER STATISTICS

YEAR	SP	MP-MS	K	K/SET	E	TA	PCT	A	A/SET	SA	SA/SET	SE	RE	DIG	DIG/SET	BS	BA	TOT	BLK/S	BE	BHE	PTS	P/SET
2011	41	19-2	53	1.29	19	133	.256	0	0.00	0	0.00	1	0	3	0.07	0	15	15	0.37	0	0	60.5	1.46
2012	76	27-4	155	2.04	53	309	.330	2	0.03	2	0.03	9	0	37	0.49	0	36	36	0.47	3	0	175.0	2.30
TOTALS	117	46-6	208	1.78	72	442	.308	2	0.02	2	0.02	10	0	40	0.34	0	51	51	0.44	3	0	235.5	2.01